



CONTACTOR, AC-3 30 KW/400 V, DC 110 V, 3-POLE,
SIZE S3, SCREW CONNECTION

Figure similar

product brand name		SIRIUS
Product designation		power contactor

General technical data:

Insulation voltage		
• Rated value	V	1 000
Degree of pollution		3
Surge voltage resistance Rated value	kV	6
Mechanical service life (switching cycles)		
• of the contactor typical		10 000 000
• of the contactor with added electronics-compatible auxiliary switch block typical		5 000 000
• of the contactor with added auxiliary switch block typical		10 000 000
Thermal short-time current restricted to 10 s	A	600
Protection class IP		
• on the front		IP00
Reference code		
• acc. to DIN EN 61346-2		Q
• acc. to DIN EN 81346-2		Q

Main circuit:

Number of poles for main current circuit		3
Number of NC contacts for main contacts		0
Number of NO contacts for main contacts		3
Operating current		
• at AC-1		

— at 400 V at ambient temperature 40 °C Rated value	A	100
— up to 690 V at ambient temperature 40 °C Rated value	A	100
— up to 690 V at ambient temperature 60 °C Rated value	A	90
• at AC-3		
— at 400 V Rated value	A	65
— at 690 V Rated value	A	47
• at AC-4 at 400 V Rated value	A	55
Operating current with 1 current path		
• at DC-1		
— at 24 V Rated value	A	90
— at 110 V Rated value	A	4.5
• at DC-3 at DC-5		
— at 24 V Rated value	A	40
— at 110 V Rated value	A	2.5
Operating current with 2 current paths in series		
• at DC-1		
— at 24 V Rated value	A	90
— at 110 V Rated value	A	90
• at DC-3 at DC-5		
— at 110 V Rated value	A	90
— at 24 V Rated value	A	90
Operating current with 3 current paths in series		
• at DC-1		
— at 24 V Rated value	A	90
— at 110 V Rated value	A	90
• at DC-3 at DC-5		
— at 110 V Rated value	A	90
— at 24 V Rated value	A	90
Operating power		
• at AC-1 at 400 V Rated value	kW	59
• at AC-2 at 400 V Rated value	kW	30
• at AC-4 at 400 V Rated value	W	30 000
Operating power		
• at AC-1		
— at 230 V at 60 °C Rated value	kW	34
— at 690 V at 60 °C Rated value	kW	102
— at 690 V Rated value	kW	102
• at AC-3		
— at 230 V Rated value	kW	18.5

— at 400 V Rated value	kW	30
— at 500 V Rated value	kW	37
— at 690 V Rated value	kW	45
Operating power for ≥ 200000 operating cycles at AC-4		
• at 400 V Rated value	kW	15.1
• at 690 V Rated value	kW	18.6
Operating frequency		
• at AC-3 maximum	1/h	1 000

Control circuit/ Control:

Type of voltage of the control supply voltage		DC
Control supply voltage for DC		
• Rated value	V	110
Operating range factor control supply voltage rated value of the magnet coil for DC		0.8 ... 1.1
Closing power of the magnet coil for DC	W	15
Holding power of the magnet coil for DC	W	15

Auxiliary circuit:

Number of NC contacts		
• for auxiliary contacts		
— instantaneous contact		0
Number of NO contacts		
• for auxiliary contacts		
— instantaneous contact		0
Operating current at AC-15		
• at 230 V Rated value	A	6
• at 400 V Rated value	A	3
Operating current		
• at DC-12 at 220 V Rated value	A	1
• at DC-13 at 220 V Rated value	A	0.3
Operating current		
• at DC-12		
— at 60 V Rated value	A	6
— at 110 V Rated value	A	3
• at DC-13		
— at 24 V Rated value	A	10
— at 60 V Rated value	A	2
— at 110 V Rated value	A	1
Contact reliability of the auxiliary contacts		1 faulty switching per 100 million (17 V, 1 mA)

UL/CSA ratings:

Contact rating of the auxiliary contacts acc. to UL	A600 / Q600
--	-------------

Short-circuit:**Design of the fuse link**

- for short-circuit protection of the main circuit
 - with type of assignment 1 required
 - with type of assignment 2 required
- for short-circuit protection of the auxiliary switch required

fuse gL/gG: 250 A

fuse gL/gG: 125 A

fuse gL/gG: 10 A

Installation/ mounting/ dimensions:**Mounting type**

- Side-by-side mounting

screw and snap-on mounting onto 35 mm and 75 mm standard mounting rail

Yes

Height

mm

146

Width

mm

70

Depth

mm

152

Spacing required

- for grounded parts
 - at the side

mm

6

Connections/ Terminals:**Design of the electrical connection**

- for main current circuit
- for auxiliary and control current circuit

screw-type terminals

screw-type terminals

Type of connectable conductor cross-section

- for main contacts
 - solid
 - stranded
 - single or multi-stranded
 - finely stranded with core end processing
 - finely stranded without core end processing
- for AWG conductors for main contacts
- for auxiliary contacts
 - solid
 - finely stranded with core end processing
- for AWG conductors for auxiliary contacts

2x (2.5 ... 16 mm²)2x (10 ... 50 mm²)2x (2,5 ... 16 mm²)2x (2.5 ... 35 mm²)2x (10 ... 35 mm²)

2x (10 ... 1/0)

2x (0.5 ... 1.5 mm²), 2x (0.75 ... 2.5 mm²), max. 2x (0.75 ... 4 mm²)2x (0.5 ... 1.5 mm²), 2x (0.75 ... 2.5 mm²)

2x (20 ... 16), 2x (18 ... 14), 1x 12

Mechanical data:**Size of contactor**

S3

Ambient conditions:**Installation altitude at height above sea level maximum**

m

2 000





Ambient temperature


- during operation
- during storage

°C	-25 ... +60
°C	-55 ... +80

Certificates/ approvals:

General Product Approval				Functional Safety/Safety of Machinery	Declaration of Conformity
 CCC	 CSA	 EAC	 UL	Type Examination	 EG-Konf.

Test Certificates	Shipping Approval				
Special Test Certificate	Type Test Certificates/Test Report	 ABS	 GL	 LRS	 RINA

Shipping Approval	other				
 RMRS	other	Confirmation	Environmental Confirmations		

Further information

Information- and Downloadcenter (Catalogs, Brochures,...)

<http://www.siemens.com/industrial-controls/catalogs>

Industry Mall (Online ordering system)

<http://www.siemens.com/industrymall>

Cax online generator

<http://support.automation.siemens.com/WW/CAXorder/default.aspx?lang=en&mlfb=3RT10441BF40>

Service&Support (Manuals, Certificates, Characteristics, FAQs,...)

<http://support.automation.siemens.com/WW/view/en/3RT10441BF40/all>

Image database (product images, 2D dimension drawings, 3D models, device circuit diagrams, EPLAN macros, ...)

http://www.automation.siemens.com/bilddb/cax_de.aspx?mlfb=3RT10441BF40&lang=en

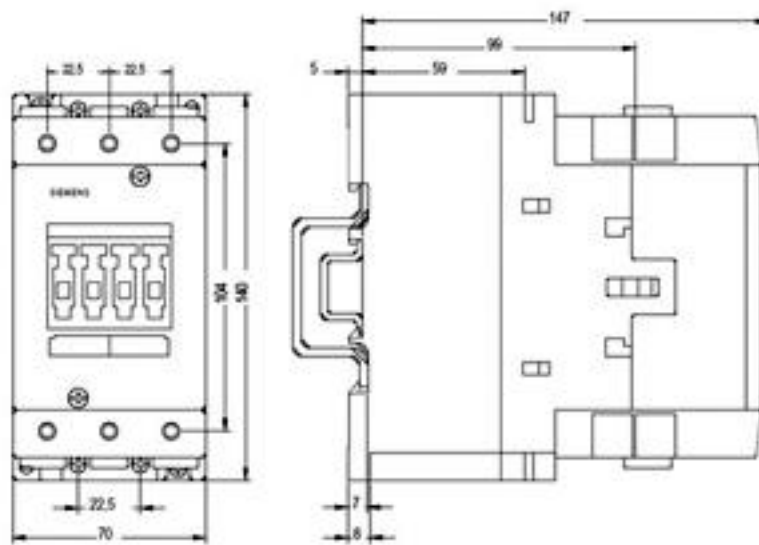


Figure similar

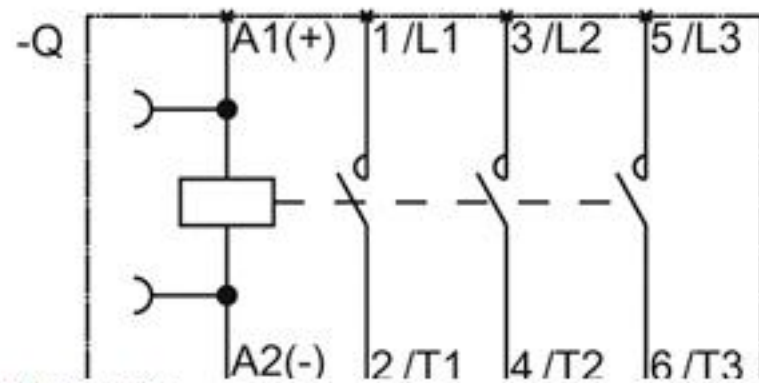


Figure similar

last modified:

27.01.2015