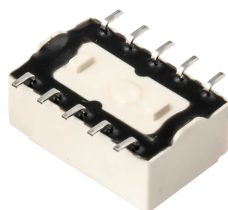




File No.:E75887



FEATURES

- Compact size and low profile:
5(H)mm×14(L)mm×9(W)mm
- Meets FCC part 68 requirements
- High sensitivity:140mW nominal operating power
- SMT and DIP types available
- Fully Sealed

CONTACT RATINGS

Contact Arrangement	2C
Contact Resistance	100mΩ (10mA 6VDC)
Contact Material	Silver Alloy, Gold Flash
Contact Rating(Resistive)	1A, 2A/30VDC; 0.5A/125VAC
Max. Switching Voltage	250VAC/220VDC
Max. Switching Current	2A
Max. Switching Power	62.5VA/60W
Mechanical Life	1×10 ⁸ operations
Electrical Life	2×10 ⁵ operations 1A/30VDC 1×10 ⁵ operations 0.5A/125VAC

CHARACTERISTICS

Insulation Resistance		1000MΩ (500VDC)
Dielectric Strength	Between coil & contacts	1000VAC 1min
	Between open contacts	1000VAC 1min
	Between 2 pole contacts	1000VAC 1min
Surge withstand voltage	Between coil & contacts	1500VAC 1min
	Between open contacts	1500VAC 1min
	Between 2 pole contacts	2500VAC 1min
Operate time (at nomi. volt.)		≤2ms
Release time (at nomi. volt.)		≤1ms
Humidity		98% RH, 40°C
Ambient temperature		-40°C ~ +70°C
Shock Resistance	Functional	490m/s ²
	Destructive	980m/s ²
Vibration resistance	Functional	10Hz to 55Hz 3mm DA
	Destructive	10Hz to 55Hz 5mm DA
Unit weight		Approx. 1.5g
Construction		Sealed Type

Notes: 1) The data shown above are initial values.

2) Please find coil temperature curve in the characteristic curved below.

This datasheet is for customers' reference. All the specifications are subject to change without notice.

ORDERING INFORMATION

Model _____ T L S - 12 R - XXXX

Model _____

L:1 coil latching _____

Nil:Single side stable

S:SMT(Single side stable only)P:DIP

Coil Voltage _____

R:Tape and reel packing(Only for SMT type) _____

Nil:Tube packing

Customer code _____

COIL DATA

at 20°C

Single side stable

Nominal Voltage VDC	Pick-up Voltage (Max.) VDC	Drop-out Voltage (Min.) VDC	Max. Allowable Voltage VDC	Coil Resistance $\Omega \pm 10\%$
3	2.25	0.3	7.5	64.3
5	3.75	0.5	12.5	178
6	4.50	0.6	15.0	257
9	6.75	0.9	22.5	579
12	9.00	1.2	30.0	1028
24	18.00	2.4	48.0	2880

1 coil latching

Nominal Voltage VDC	Action Voltage (Max.) VDC	Reset Voltage (Min.) VDC	Max. Allowable Voltage VDC	Coil Resistance $\Omega \pm 10\%$
3	2.25	2.25	8.7	90
5	3.75	3.75	14.5	250
6	4.50	4.50	17.4	360
9	6.75	6.75	26.1	810
12	9.00	9.00	34.8	1440
24	18.00	18.00	57.6	3840



*** SINCE 1976 ***

TEL:(516) 328-9292 FAX:(516)326-9125 www.hascorelays.com email:info@hascorelays.com

RELAYS

T SERIES

DPDT

2 Amp

COIL

Coil Power	Single side stable:140mW(24VDC:200mW)
	1 coil latching:100mW(24VDC:150mW)

SAFETY APPROVAL RATINGS

UL&CUL	0.5A/125VAC 1A, 2A/30VDC
--------	-----------------------------

OUTLINE DIMENSIONS, WIRING DIAGRAM AND PC BOARD LAYOUT.

Unit: inch (mm)

Outline Dimensions

Wiring Diagram (Bottom view)

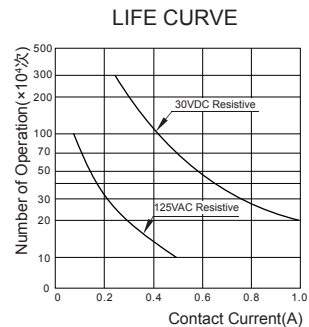
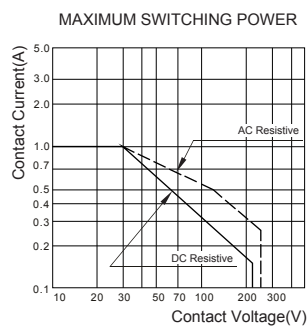
PCB Layout (Bottom view)

Biserial straight pin			

Remark: 1) In case of no tolerance shown in outline dimension: outline dimension $\leq 1\text{mm}$, tolerance should be $\pm 0.2\text{mm}$; outline dimension $> 1\text{mm}$ and $\leq 5\text{mm}$, tolerance should be $\pm 0.3\text{mm}$; outline dimension $> 5\text{mm}$, tolerance should be $\pm 0.4\text{mm}$.

2) The tolerance without indicating for PCB layout is always $\pm 0.1\text{mm}$.

CHARACTERISTIC CURVES



This datasheet is for customers' reference. All the specifications are subject to change without notice.