

PRODUCT : LCD MODULE
MODEL NO. : TFT800480-33-E
SUPPLIER : TRULY SEMICONDUCTORS LTD.
DATE : August 27, 2009



CERT. No. QAC0946535
(ISO9001)



CERT. No. HKG002005
(ISO14001)

SPECIFICATION

Revision: 1.1

TFT800480-33-E

This module uses ROHS material

This specification maybe changed without any notice in order to improve performance or quality etc. Please contact TRULY R&D department for update specification and product status before design for this product or release the order.

TRULY SEMICONDUCTORS LTD:

CUSTOMER:

Quality Assurance Department: _____

Approved by: _____

Technical Department: _____

Approved by: _____

CONTENTS

n	GENERAL INFORMATION
n	ABSOLUTE MAXIMUM RATINGS
n	ELECTRICAL CHARACTERISTICS
n	BACKLIGHT CHARACTERISTICS
n	EXTERNAL DIMENSIONS
n	AC CHARACTERISTICS
n	WAVEFORM
n	ELECTRO-OPTICAL CHARACTERISTICS
n	INTERFACE DESCRIPTION
n	REFERENCE APPLICATION CIRCUIT
n	RELIABILITY TEST
n	INSPECTION CRITERION
n	PRECAUTIONS FOR USING LCD MODULES
n	PRIOR CONSULT MATTER
n	FACTORY CONTACT INFORMATION

WRITTEN BY	CHECKED BY	APPROVED BY
CHEN XIAO LI	HAUNG XIAO NIU	ZHU JIN BAO

n GENERAL INFORMATION

Item	Contents	Unit
LCD type	TFT TRANSMISSIVE	/
Viewing direction	6:00 O' Clock	12:00O' Clock(good viewing angle)
Module outline (W × H)	165.00 × 106.4	mm ²
Active area (W×H)	152.40 × 91.44	mm ²
Number of Dots	800 × 480	/
Pixel pitch (W × H)	0.1905 × 0.1905	mm ²
Backlight Type	LED	/
Display colors	16.7M	/
Driver IC	1X(HX8678-B)+2X(HX8262-A)	/
Interface Type	Parallel RGB	/
Input voltage	3.3	V

nABSOLUTE MAXIMUM RATINGS

Parameter	Symbol	Min	Max	Unit
Power supply voltage	V _{CC}	0	3.6	V
Operating temperature	T _{OP}	-10	60	°C
Storage temperature	T _{ST}	-20	70	°C
Humidity	RH	-	90%(Max60°C)	RH

nELECTRICAL CHARACTERISTICS

Parameter	Symbol	Min	Typ	Max	Unit
Power supply	V _{CC}	3.2	3.3	3.6	V
Input Current	I _{VCC}	-	195.07	292.60	mA
Input voltage ' H ' level	V _{IH}	0.8 V _{CC}	-	V _{CC}	V
Input voltage ' L ' level	V _{IL}	GND	-	0.2 V _{CC}	V
Output voltage ' H ' level	V _{OH}	V _{CC} -0.4	-	-	V
Output voltage ' L ' level	V _{OL}	GND	-	GND+0.4	V

n BACKLIGHT CHARACTERISTICS

Item	Symbol	Min.	Typ.	Max.	Unit
Forward voltage	V _f	9.0	9.6	10.5	V
Luminance	L _v	4200	-	-	cd/m ²
Lamp current	I _f	-	180	-	mA
Number of LED	-	27			Piece
Connection mode	S/P	3series,9 parallel			-

Using condition: constant current driving method If= 180 mA (+/-10%).

n AC CHARACTERISTICS

Resolution : 800x480

• sync mode

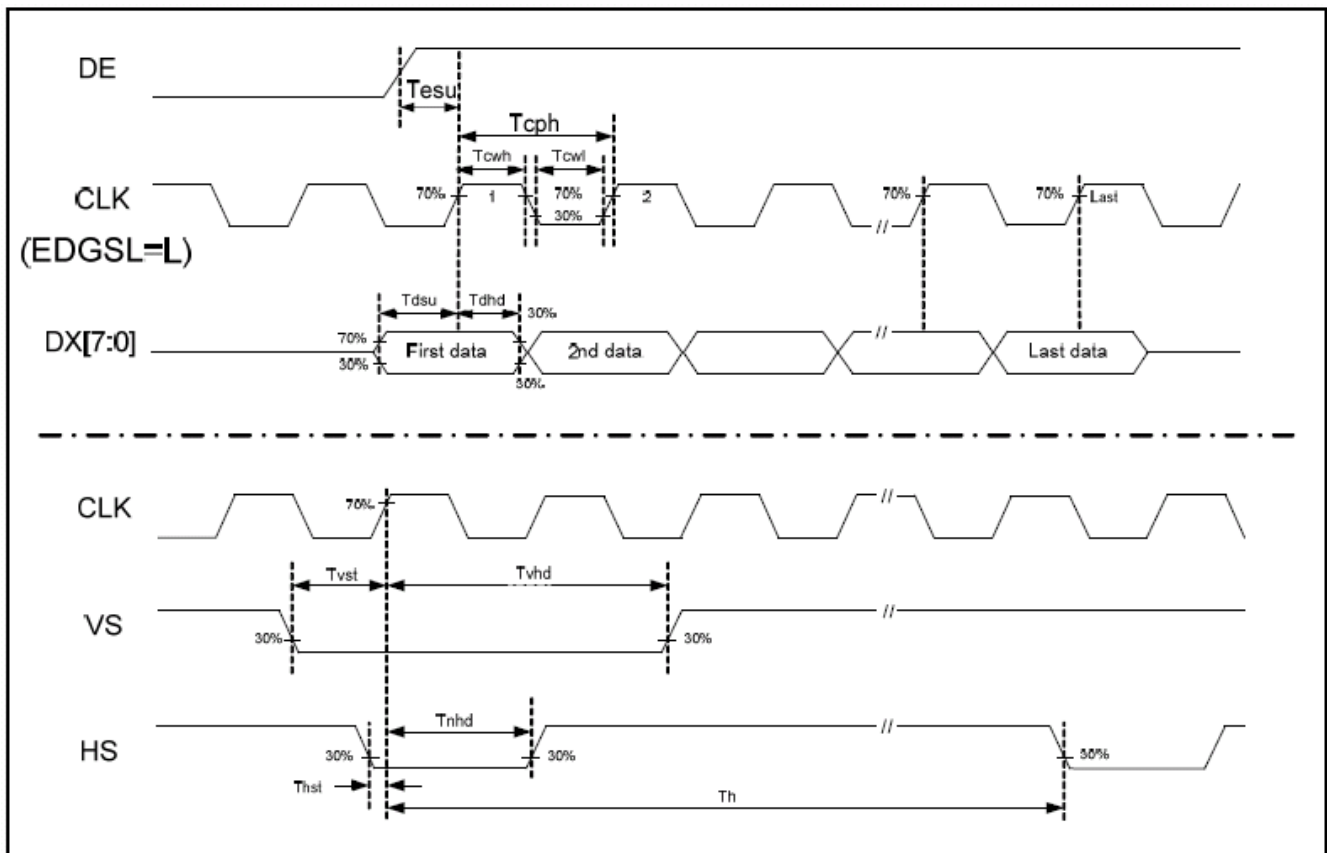
PARAMETER	Symbol	Spec.			Unit
		Min.	Typ.	Max.	
CLK frequency	F_{CPH}	-	33.26	-	MHz
CLK period	T_{CPH}	-	30.06	-	ns
CLK pulse duty	T_{CWH}	40	50	60	%
HS period	T_H	-	1056	-	T_{CPH}
HS pulse width	T_{WH}	1	128	-	T_{CPH}
HS-first horizontal data time	T_{HS}	STHD[7:0]+88 ⁽¹⁾			T_{CPH}
HS Active Time	T_{HA}	-	800	-	T_{CPH}
VS period	T_V	-	525	-	T_H
VS pulse width	T_{WV}	1	2	-	T_H
VS-DE time	T_{VS}	STVD[6:0]+8			T_H
VS Active Time	T_{VA}	-	480	-	T_H

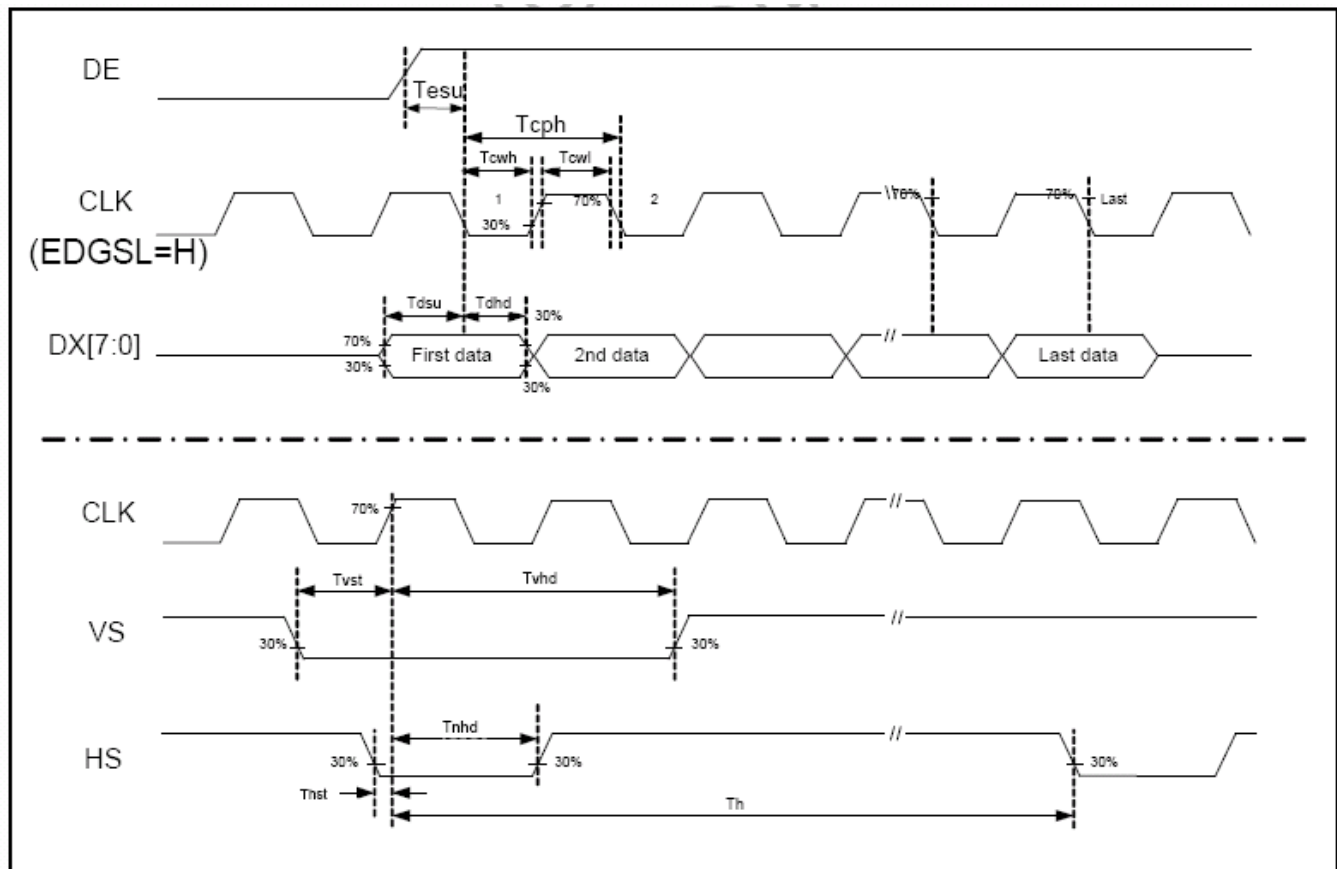
• DE mode

PARAMETER	Symbol	Spec.			Unit
		Min.	Typ.	Max.	
CLK frequency	F_{CPH}	-	33.26	-	MHz
CLK period	T_{CPH}	-	30.06	-	ns
CLK pulse duty	T_{CWH}	40	50	60	%
DE period	$T_{DEH}+T_{DEL}$	1000	1056	1200	T_{CPH}
DE pulse width	T_{DH}	-	800	-	T_{CPH}
DE frame blanking	T_{HS}	10	45	110	$T_{DEH}+T_{DEL}$
DE frame width	T_{EP}	-	480	-	$T_{DEH}+T_{DEL}$

n WAVEFORM

Timing Controller Timing Chart Clock and Data input waveforms





n ELECTRO-OPTICAL CHARACTERISTICS

Item	Symbol	Condition	Min	Typ	Max	Unit	Remark	Note
Response time	Tr +Tf	$\theta=0^{\circ}$ $\Delta E=0^{\circ}$ $T_a=25^{\circ}\text{C}$	---	22.2	33.3	ms	Fig.1	4
Contrast ratio	Cr		300	925	---	---	FIG 2.	1
Luminance uniformity	d WHITE		70	79	---	%	FIG 2.	3
Surface Luminance	Lv		279	349	---	cd/m ²	FIG 2.	2
Viewing angle range	q	$\Delta E = 90^{\circ}$	70	80	---	deg	FIG 3.	6
		$\Delta E = 270^{\circ}$	63	73	---	deg	FIG 3.	
		$\Delta E = 0^{\circ}$	70	80	---	deg	FIG 3.	
		$\Delta E = 180^{\circ}$	70	80	---	deg	FIG 3.	
CIE (x, y) chromaticity	Red x	$\theta=0^{\circ}$ $\Delta E=0^{\circ}$ $T_a=25^{\circ}\text{C}$	0.526	0.576	0.626		FIG 2.	5
	Red y		0.310	0.360	0.410			
	Green x		0.307	0.357	0.407			
	Green y		0.532	0.582	0.632			
	Blue x		0.106	0.156	0.206			
	Blue y		0.084	0.134	0.184			
	White x		0.271	0.331	0.391			
	White y		0.243	0.303	0.363			

Note 1. Contrast Ratio(CR) is defined mathematically as For more information see FIG 2.:

$$\text{Contrast Ratio} = \frac{\text{Average Surface Luminance with all white pixels } (P_1, P_2, P_3, P_4, P_5)}{\text{Average Surface Luminance with all black pixels } (P_1, P_2, P_3, P_4, P_5)}$$

Note 2. Surface luminance is the LCD surface from the surface with all pixels displaying white. For more information see FIG 2.

$$L_v = \text{Average Surface Luminance with all white pixels } (P_1, P_2, P_3, P_4, P_5)$$

Note 3. The uniformity in surface luminance, δ WHITE is determined by measuring luminance at each test position 1 through 5, and then dividing the maximum luminance of 5 points luminance by minimum luminance of 5 points luminance. For more information see FIG 2.

$$d \text{ WHITE} = \frac{\text{Minimum Surface Luminance with all white pixels } (P_1, P_2, P_3, P_4, P_5)}{\text{Maximum Surface Luminance with all white pixels } (P_1, P_2, P_3, P_4, P_5)}$$

Note 4. Response time is the time required for the display to transition from White to black(Rise Time, Tr) and from black to white(Decay Time, Tf). For additional information see FIG 1. The test equipment is Autronic-Melchers's ConoScope. Series

Note 5. CIE (x, y) chromaticity, The x,y value is determined by measuring luminance at each test position 1 through 5, and then make average value

Note 6. Viewing angle is the angle at which the contrast ratio is greater than 2. For TFT module the contrast ratio is greater than 10. The angles are determined for the horizontal or x axis and the vertical or y axis with respect to the z axis which is normal to the LCD surface. For more information see FIG 3.

Note 7. For Viewing angle and response time testing, the testing data is base on Autronic-Melchers's ConoScope. Series Instruments. For contrast ratio, Surface Luminance, Luminance uniformity, CIE The test data is base on TOPCON's BM-5 photo detector.

Note 8. For TFT module, Gray scale reverse occurs in the direction of panel viewing angle.

FIG.1. The definition of Response Time

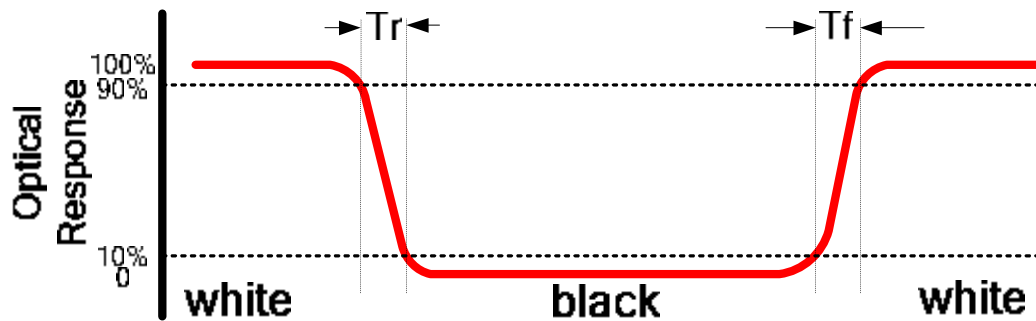


FIG.2. Measuring method for Contrast ratio, surface luminance, Luminance uniformity, CIE (x, y) chromaticity

A : 5 mm
 B : 5 mm
 H, V : Active Area
 Light spot size $\varnothing=5\text{mm}$, 500mm distance from the LCD surface to detector lens
 measurement instrument is TOPCON's luminance meter BM-5

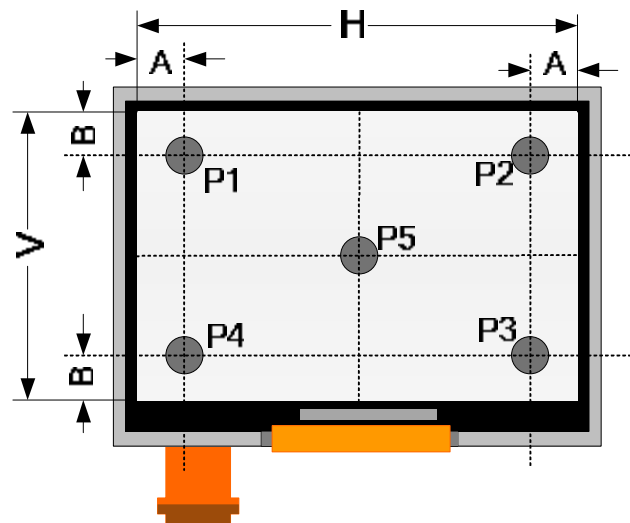
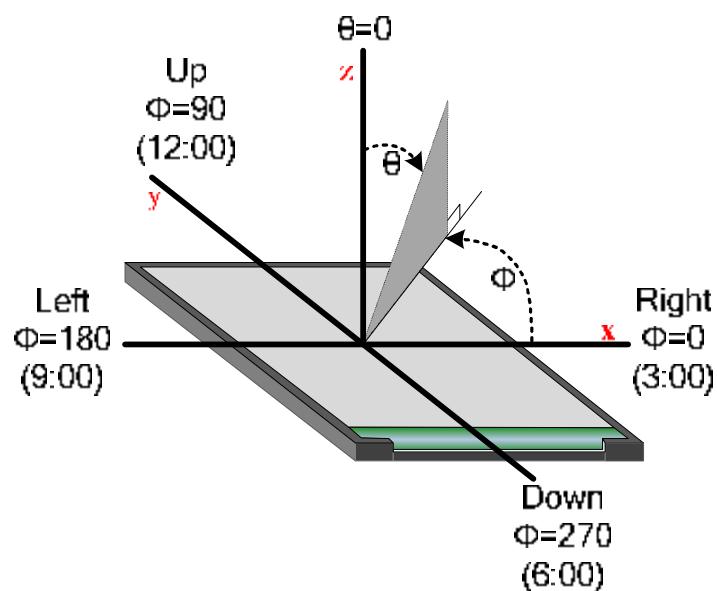


FIG.3. The definition of viewing angle



n INTERFACE DESCRIPTION

CON1

Interface NO.	NAME	Level	DESCRIPTION	When not in use
1	GND	0	POWER GROUND	-
2	GND	0	POWER GROUND	-
3	VCC	3.3V	Power supply to Moudle 3.3V(type)	-
4	VCC	3.3V	Power supply to Moudle 3.3V(type)	-
5	R0	H/L	Red data bus	OPEN/GND
6	R1			
7	R2			
8	R3			
9	R4			
10	R5			
11	R6			
12	R7			
13	G0	H/L	Green data bus	OPEN/GND
14	G1			
15	G2			
16	G3			
17	G4			
18	G5			
19	G6			
20	G7			
21	B0	H/L	Blue data bus	OPEN/GND
22	B1			
23	B2			
24	B3			
25	B4			
26	B5			
27	B6			
28	B7			
29	GND	0	POWER GROUND	-
30	DOTCLK	H/L	Clock signal.Latch data by falling edge.	OPEN/GND
31	NC	-	No connect	OPEN
32	HSYNC	H/L	Horizontal sync input in digital parallel RGB.	OPEN/VCC
33	VSYNC	H/L	Vertical sync input in digital parallel RGB.	OPEN/VCC
34	DE	H/L	Input data enable control.When DE mode,active High to enable data input.	OPEN/GND
35	NC	-	No connect	OPEN
36	NC	-	No connect	OPEN
37	GND	0	POWER GROUND	-
38	GND	0	POWER GROUND	-
39	LR	H/L	Shift direction of HX8362-A Source Driver internal shift register is controlled by this pin as shown below: LR=H:SO1...SO1200(default pull high) LR=L:SO1200...SO1	OPEN/VCC

40	UD	H/L	Gate Driver Up/down scan setting. When UD=H,reverse scan. When UD=L,normal scan.(Default pull low)	OPEN/GND
----	----	-----	--	----------

CON2

Interface NO.	NAME	Level	DESCRIPTION	When not in use
1	X-	-	Touch panel coordinate in the left side of envisage drawing	open
2	Y-	-	Touch panel coordinate in the down side of envisage drawing	open
3	X+	-	Touch panel coordinate in the right side of envisage drawing	open
4	Y+	-	Touch panel coordinate in the up side of envisage drawing	open

n APPLICATION CIRCUIT

Please consult our technical department for detail information.


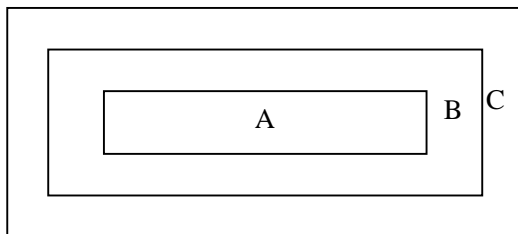
n RELIABILITY TEST

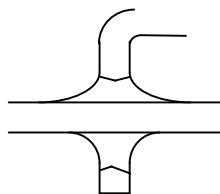
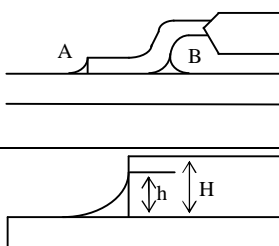
No.	Test Item	Test Condition	Inspection after test
1	High Temperature Storage	70±2℃/200 hours	Inspection after 2~4 hours storage at room temperature, the sample shall be free from defects: 1.Air bubble in the LCD; 2.Sealleak; 3.Non-display; 4.missing segments; 5.Glass crack; 6.Current Idd is twice higher than initial value.
2	Low Temperature Storage	-20±2℃/200 hours	
3	High Temperature Operating	60±2℃/120 hours	
4	Low Temperature Operating	-10±2℃/120 hours	
5	Temperature Cycle	-10±2℃~25~60±2℃×10cycles (30min.) (5min.) (30min.)	
6	Damp Proof Test	50℃±5℃×90%RH/120 hours	
7	Vibration Test	Frequency: 10Hz~55Hz~10Hz Amplitude: 1.5mm, X, Y, Z direction for total 3hours (Packing condition)	
8	Drooping test	Drop to the ground from 1m height, one time, every side of carton. (Packing condition)	
9	ESD test	Voltage:±8KV R: 330Ω C: 150pF Air discharge, 10time	

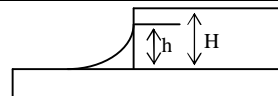
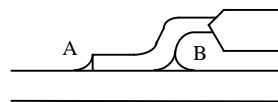
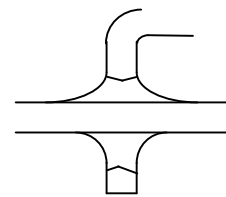
Remark:

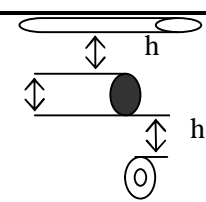
- 1.The test samples should be applied to only one test item.
- 2.Sample size for each test item is 5~10pcs.
- 3.For Damp Proof Test, Pure water(Resistance>10MΩ) should be used.
- 4.In case of malfunction defect caused by ESD damage, if it would be recovered to normal state after resetting, it would be judge as a good part.
Using ionizer(an antistatic blower) is recommended at working area in order to reduce electro-static voltage.
When removing protection film from LCM panel, peel off the tag slowly(recommended more than one second) while blowing with ionizer toward the peeling face to minimize ESD which may damage electrical circuit.
- 5.EL evaluation should be excepted from reliability test with humidity and temperature: Some defects such as black spot/blemish can happen by natural chemical reaction with humidity and Fluorescence EL has.
- 6.Please use automatic switch menu(or roll menu) testing mode when test operating mode.

INSPECTION CRITERION

 OUTGOING QUALITY STANDARD	P.1 of 5
TITLE:FUNCTIONAL TEST & INSPECTION CRITERIA	Normal LCM Product
<p>This specification is made to be used as the standard acceptance/rejection criteria for Normal LCM Product.</p> <p>1 Sample plan</p> <p>Sampling plan according to GB/T2828.1-2003/ISO 2859-1: 1999 and ANSI/ASQC Z1.4-1993, normal level 2 and based on:</p> <p>Major defect: AQL 0.65</p> <p>Minor defect: AQL 1.5</p> <p>2. Inspection condition</p> <p>Viewing distance for cosmetic inspection is about 30cm with bare eyes, and under an environment of 20~40W light intensity, all directions for inspecting the sample should be within 45° against perpendicular line. (Normal temperature 20~25°C and normal humidity 60±15%RH).</p> <p>Driving voltage</p> <p>The Vop value from which the most optimal contrast can be obtained near the specified Vop in the specification (Within ±0.5V of the typical value at 25°C.).</p> <p>3. Definition of inspection zone in LCD.</p> <div data-bbox="488 1272 1008 1505" data-label="Diagram">  </div> <p>Zone A: character/Digit area</p> <p>Zone B: viewing area except Zone A (ZoneA+ZoneB=minimum Viewing area)</p> <p>Zone C: Outside viewing area (invisible area after assembly in customer's product)</p> <p>Fig.1 Inspection zones in an LCD.</p> <p>Note: As a general rule, visual defects in Zone C are permissible, when it is no trouble for quality and assembly of customer's product.</p>	

TRULY® OUTGOING QUALITY STANDARD			P.2 of 5	
TITLE:FUNCTIONAL TEST & INSPECTION CRITERIA			Normal LCM Product	
4.Inspection Standard				
4.1 Major Defect				
Item No	Items to be inspected	Inspection Standard	Classification of defects	
4.1.1	All functional defects	1) No display 2) Display abnormally 3) Missing vertical, horizontal segment 4) Short circuit 5) Back-light no lighting, flickering and abnormal lighting.	Major	
4.1.2	Missing	Missing component		
4.1.3	Outline dimension	Overall outline dimension beyond the drawing is not allowed.		
4.2 Cosmetic Defect				
4.2.1 Module Cosmetic Criteria				
No.	Item	Judgement Criterion	Partition	
1	Difference in Spec.	None allowed	Major	
2	Pattern peeling	No substrate pattern peeling and floating	Major	
3	Soldering defects	No soldering missing No soldering bridge No cold soldering	Major Major Minor	
4	Resist flaw on Printed Circuit Boards	visible copper foil (Ø0.5mm or more) on substrate pattern	Minor	
5	Accretion of metallic Foreign matter	No accretion of metallic foreign matters (Not exceed Ø0.2mm)	Minor Minor	
6	Stain	No stain to spoil cosmetic badly	Minor	
7	Plate discoloring	No plate fading, rusting and discoloring	Minor	
8	Solder amount	a. Soldering side of PCB Solder to form a ‘Filet’ all around the lead. Solder should not hide the lead form perfectly. (too much) b. Components side (In case of ‘Through Hole PCB’) Solder to reach the Components side of PCB.	Minor	
	1. Lead parts			
	2. Flat packages	Either ‘Toe’ (A) or ‘Seal’ (B) of the lead to be covered by ‘Filet’. Lead form to be assume over solder.	Minor	
	3. Chips	(3/2) H ≥ h ≥ (1/2) H 	Minor	



TRULY® OUTGOING QUALITY STANDARD			P.3 of 5	
TITLE:FUNCTIONAL TEST & INSPECTION CRITERIA			Normal LCM Product	
9	Solder ball/Solder splash	<p>a. The spacing between solder ball and the conductor or solder pad $h \geq 0.13\text{mm}$. The diameter of solder ball $d \leq 0.15\text{mm}$.</p> <p>b. The quantity of solder balls or solder Splashes isn't beyond 5 in 600 mm^2.</p> <p>c. Solder balls/Solder splashes do not violate minimum electrical clearance.</p> <p>d. Solder balls/Solder splashes must be entrapped/encapsulated Or attached to the metal surface.</p> <p>NOTE: Entrapped/encapsulated/attached is intended to mean that normal service environment of the product will not cause a solder ball to become dislodged.</p>		Minor Minor Major Minor

4.2.2Cosmetic Criteria (Non-Operating)

No.	Defect	Judgment Criterion	Partition										
1	Spots	In accordance with <i>Screen Cosmetic Criteria (Operating) No.1.</i>	Minor										
2	Lines	In accordance with <i>Screen Cosmetic Criteria (Operating) No.2.</i>	Minor										
3	Bubbles in polarizer	<table><tr><th>Size : d mm</th><th>Acceptable Qty in active area</th></tr><tr><td>d ≤ 0.3</td><td>Disregard</td></tr><tr><td>0.3 < d ≤ 1.0</td><td>3</td></tr><tr><td>1.0 < d ≤ 1.5</td><td>1</td></tr><tr><td>1.5 < d</td><td>0</td></tr></table>	Size : d mm	Acceptable Qty in active area	d ≤ 0.3	Disregard	0.3 < d ≤ 1.0	3	1.0 < d ≤ 1.5	1	1.5 < d	0	Minor
Size : d mm	Acceptable Qty in active area												
d ≤ 0.3	Disregard												
0.3 < d ≤ 1.0	3												
1.0 < d ≤ 1.5	1												
1.5 < d	0												
4	Scratch	In accordance with spots and lines operating cosmetic criteria. When the light reflects on the panel surface, the scratches are not to be remarkable.	Minor										
5	Allowable density	Above defects should be separated more than 30mm each other.	Minor										
6	Coloration	Not to be noticeable coloration in the viewing area of the LCD panels. Back-lit type should be judged with back-lit on state only.	Minor										
7	Contamination	Not to be noticeable.	Minor										

TRULY® OUTGOING QUALITY STANDARD

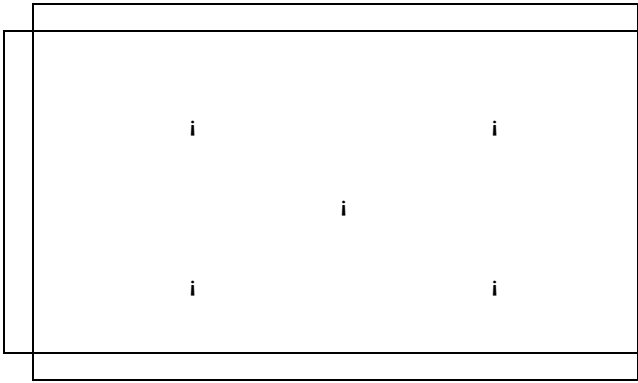
P.4 of 5

TITLE:FUNCTIONAL TEST & INSPECTION CRITERIA

Normal LCM Product

4.2.3 Cosmetic Criteria (Operating)

No.	Defect	Judgment Criterion	Partition																																												
1	Spots	<div>A) I Clear</div> <table><thead><tr><th>Lcd size</th><th>Size : d mm</th><th>Acceptable Qty in active area</th></tr></thead><tbody><tr><td rowspan="4">Lcd size $\leq 8.0'$</td><td>$d \leq 0.1$</td><td>Disregard</td></tr><tr><td>$0.1 < d \leq 0.2$</td><td>6</td></tr><tr><td>$0.2 < d \leq 0.3$</td><td>2</td></tr><tr><td>$0.3 < d$</td><td>0</td></tr><tr><td rowspan="4">Lcd size $> 8.0'$</td><td>$d \leq 0.1$</td><td>Disregard</td></tr><tr><td>$0.1 < d \leq 0.3$</td><td>10</td></tr><tr><td>$0.3 < d \leq 0.5$</td><td>5</td></tr><tr><td>$0.5 < d$</td><td>0</td></tr></tbody></table> <div>Note : Including pin holes and defective dots which must be within one pixel size; Total defective point shall not exceed 6 pcs no more than 8 inch LCD and 10PCS for more than 8 inch LCD.</div> <div>B) Unclear</div> <table><thead><tr><th>Lcd size</th><th>Size : d mm</th><th>Acceptable Qty in active area</th></tr></thead><tbody><tr><td rowspan="4">Lcd size $\leq 8.0'$</td><td>$d \leq 0.2$</td><td>Disregard</td></tr><tr><td>$0.2 < d \leq 0.5$</td><td>6</td></tr><tr><td>$0.5 < d \leq 0.7$</td><td>2</td></tr><tr><td>$0.7 < d$</td><td>0</td></tr><tr><td rowspan="5">Lcd size $> 8.0'$</td><td>$d \leq 0.2$</td><td>Disregard</td></tr><tr><td>$0.2 < d \leq 0.5$</td><td>10</td></tr><tr><td>$0.5 < d \leq 0.7$</td><td>3</td></tr><tr><td>$0.7 < d \leq 1.0$</td><td>1</td></tr><tr><td>$1.0 < d$</td><td>0</td></tr></tbody></table> <div>Note : Total defective point shall not exceed 6 pcs for no more than 8 inch LCD and 10PCS for more than 8 inch LCD.</div>	Lcd size	Size : d mm	Acceptable Qty in active area	Lcd size $\leq 8.0'$	$d \leq 0.1$	Disregard	$0.1 < d \leq 0.2$	6	$0.2 < d \leq 0.3$	2	$0.3 < d$	0	Lcd size $> 8.0'$	$d \leq 0.1$	Disregard	$0.1 < d \leq 0.3$	10	$0.3 < d \leq 0.5$	5	$0.5 < d$	0	Lcd size	Size : d mm	Acceptable Qty in active area	Lcd size $\leq 8.0'$	$d \leq 0.2$	Disregard	$0.2 < d \leq 0.5$	6	$0.5 < d \leq 0.7$	2	$0.7 < d$	0	Lcd size $> 8.0'$	$d \leq 0.2$	Disregard	$0.2 < d \leq 0.5$	10	$0.5 < d \leq 0.7$	3	$0.7 < d \leq 1.0$	1	$1.0 < d$	0	Minor
Lcd size	Size : d mm	Acceptable Qty in active area																																													
Lcd size $\leq 8.0'$	$d \leq 0.1$	Disregard																																													
	$0.1 < d \leq 0.2$	6																																													
	$0.2 < d \leq 0.3$	2																																													
	$0.3 < d$	0																																													
Lcd size $> 8.0'$	$d \leq 0.1$	Disregard																																													
	$0.1 < d \leq 0.3$	10																																													
	$0.3 < d \leq 0.5$	5																																													
	$0.5 < d$	0																																													
Lcd size	Size : d mm	Acceptable Qty in active area																																													
Lcd size $\leq 8.0'$	$d \leq 0.2$	Disregard																																													
	$0.2 < d \leq 0.5$	6																																													
	$0.5 < d \leq 0.7$	2																																													
	$0.7 < d$	0																																													
Lcd size $> 8.0'$	$d \leq 0.2$	Disregard																																													
	$0.2 < d \leq 0.5$	10																																													
	$0.5 < d \leq 0.7$	3																																													
	$0.7 < d \leq 1.0$	1																																													
	$1.0 < d$	0																																													
2	Lines	<div>A) Clear</div> <div></div> <div>Note : () - Acceptable Qty in active area L - Length (mm) W - Width (mm) ∞ - Disregard</div> <div>B) Unclear</div> <div></div> <div>‘Clear’ = The shade and size are not changed by V_{op}. ‘Unclear’ = The shade and size are changed by V_{op}.</div>	Minor																																												

TRULY® OUTGOING QUALITY STANDARD			P.5 of 5
TITLE:FUNCTIONAL TEST & INSPECTION CRITERIA			Normal LCM Product
3	Rubbing line	Not to be noticeable.	Minor
4	Allowable density	Above defects should be separated more than 10mm each other.	Minor
5	Rainbow	Not to be noticeable.	Minor
6	Dot size	To be 95% ~ 105% of the dot size (Typ.) in drawing. Partial defects of each dot (ex. pin-hole) should be treated as ‘Spot’. (see <i>Screen Cosmetic Criteria (Operating) No.1</i>)	Minor
7	Uneven brightness (only back-lit type module)	Uneven brightness must be $B_{MAX} / B_{MIN} \leq 2$ - B_{MAX} : Max. value by measure in 5 points - B_{MIN} : Min. value by measure in 5 points Divide active area into 4 vertically and horizontally. Measure 5 points shown in the following figure.  <i>i</i> : Measuring points	Minor

Note :

- (1) Size : $d = (\text{long length} + \text{short length}) / 2$
- (2) The limit samples for each item have priority.
- (3) Complex defects are defined item by item, but if the numbers of defects are defined in above table, the total number should not exceed 10.
- (4) In case of ‘concentration’, even the spots or the lines of ‘disregarded’ size should not allowed. Following three situations should be treated as ‘concentration’.
 - 7 or over defects in circle of $\varnothing 5\text{mm}$.
 - 10 or over defects in circle of $\varnothing 10\text{mm}$.
 - 20 or over defects in circle of $\varnothing 20\text{mm}$.

nPRECAUTIONS FOR USING LCD MODULES

Handling Precautions

(1) The display panel is made of glass and polarizer. As glass is fragile. It tends to become or chipped during handling especially on the edges. Please avoid dropping or jarring. Do not subject it to a mechanical shock by dropping it or impact.

(2) If the display panel is damaged and the liquid crystal substance leaks out, be sure not to get any in your mouth. If the substance contacts your skin or clothes, wash it off using soap and water.

(3) Do not apply excessive force to the display surface or the adjoining areas since this may cause the color tone to vary. Do not touch the display with bare hands. This will stain the display area and degraded insulation between terminals (some cosmetics are determined to the polarizer).

(4) The polarizer covering the display surface of the LCD module is soft and easily scratched. Handle this polarizer carefully. Do not touch, push or rub the exposed polarizers with anything harder than an HB pencil lead (glass, tweezers, etc.). Do not put or attach anything on the display area to avoid leaving marks on. Condensation on the surface and contact with terminals due to cold will damage, stain or dirty the polarizer. After products are tested at low temperature they must be warmed up in a container before coming is contacting with room temperature air.

(5) If the display surface becomes contaminated, breathe on the surface and gently wipe it with a soft dry cloth. If it is heavily contaminated, moisten cloth with one of the following solvents

- Isopropyl alcohol
- Ethyl alcohol

Do not scrub hard to avoid damaging the display surface.

(6) Solvents other than those above-mentioned may damage the polarizer. Especially, do not use the following.

- Water
- Ketone
- Aromatic solvents

Wipe off saliva or water drops immediately, contact with water over a long period of time may cause deformation or color fading. Avoid contacting oil and fats.

(7) Exercise care to minimize corrosion of the electrode. Corrosion of the electrodes is accelerated by water droplets, moisture condensation or a current flow in a high-humidity environment.

(8) Install the LCD Module by using the mounting holes. When mounting the LCD module make sure it is free of twisting, warping and distortion. In particular, do not forcibly pull or bend the I/O cable or the backlight cable.

(9) Do not attempt to disassemble or process the LCD module.

(10) NC terminal should be open. Do not connect anything.

(11) If the logic circuit power is off, do not apply the input signals.

(12) Electro-Static Discharge Control, Since this module uses a CMOS LSI, the same careful attention should be paid to electrostatic discharge as for an ordinary CMOS IC. To prevent destruction of the elements by static electricity, be careful to maintain an optimum work environment.

- Before remove LCM from its packing case or incorporating it into a set, be sure the module and your body have the same electric potential. Be sure to ground the body when handling the LCD modules.

- Tools required for assembling, such as soldering irons, must be properly grounded. make certain the AC power source for the soldering iron does not leak. When using an electric screwdriver to attach LCM, the screwdriver should be of ground potentiality to minimize as much as possible any transmission of electromagnetic waves produced sparks coming from the commutator of the motor.

- To reduce the amount of static electricity generated, do not conduct assembling and other work under dry conditions. To reduce the generation of static electricity be careful that the air in the work is not too dried. A relative humidity of 50%-60% is recommended. As far as possible make the electric potential of your work clothes and that of the work bench the ground potential

- The LCD module is coated with a film to protect the display surface. Exercise care when peeling off this protective film since static electricity may be generated

(13) Since LCM has been assembled and adjusted with a high degree of precision, avoid applying excessive shocks to the module or making any alterations or modifications to it.

- Do not alter, modify or change the shape of the tab on the metal frame.

- Do not make extra holes on the printed circuit board, modify its shape or change the positions of components to be attached.

- Do not damage or modify the pattern writing on the printed circuit board.

- Absolutely do not modify the zebra rubber strip (conductive rubber) or heat seal connector.

- Except for soldering the interface, do not make any alterations or modifications with a soldering iron.

- Do not drop, bend or twist LCM.

Handling precaution for LCM

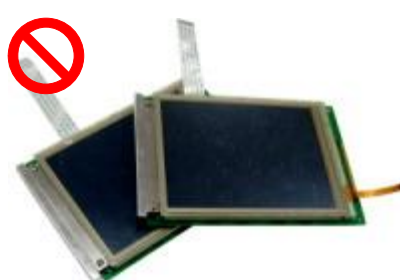
LCM is easy to be damaged. Please note below and be careful for handling.

Correct handling:

As above picture, please handle with anti-static gloves around LCM edges.

Incorrect handling:

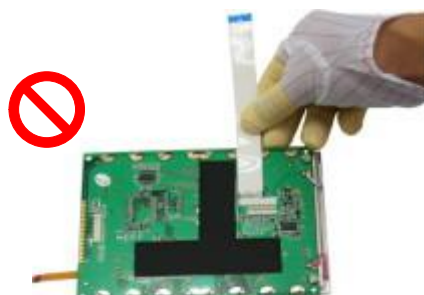
Please don't touch IC directly.



Please don't stack LCM.



Please don't hold the surface of panel.



Please don't stretch interface of output, such as FPC cable.



Please don't hold the surface of IC.



Please don't operate with sharp stick such as pens.

Storage Precautions

When storing the LCD modules, the following precaution is necessary.

- (1) Store them in a sealed polyethylene bag. If properly sealed, there is no need for the dessicant.
- (2) Store them in a dark place. Do not expose to sunlight or fluorescent light, keep the temperature between 0°C and 35°C, and keep the relative humidity between 40%RH and 60%RH.
- (3) The polarizer surface should not come in contact with any other objects. (We advise you to store them in the anti-static electricity container in which they were shipped.

Others

Liquid crystals solidify under low temperature (below the storage temperature range) leading to defective orientation or the generation of air bubbles (black or white). Air bubbles may also be generated if the module is subject to a low temperature.

If the LCD modules have been operating for a long time showing the same display patterns, the display patterns may remain on the screen as ghost images and a slight contrast irregularity may also appear. A normal operating status can be regained by suspending use for some time. It should be noted that this phenomenon does not adversely affect performance reliability.

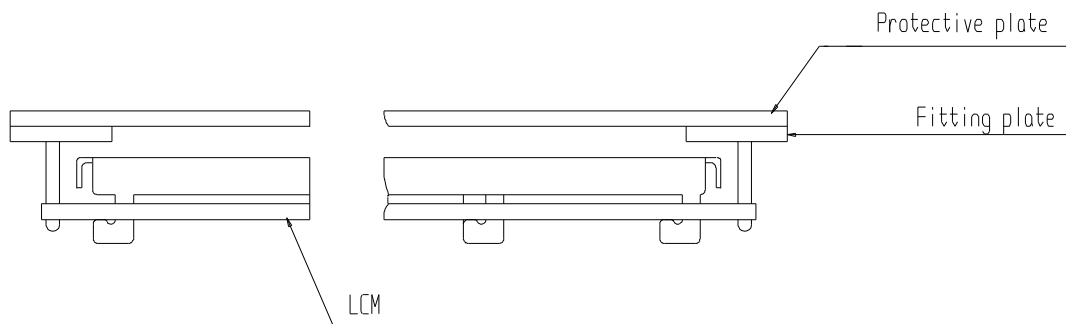
To minimize the performance degradation of the LCD modules resulting from destruction caused by static electricity etc., exercise care to avoid holding the following sections when handling the modules.

- Exposed area of the printed circuit board.
- Terminal electrode sections.

USING LCD MODULES**Installing LCD Modules**

The hole in the printed circuit board is used to fix LCM as shown in the picture below. Attend to the following items when installing the LCM.

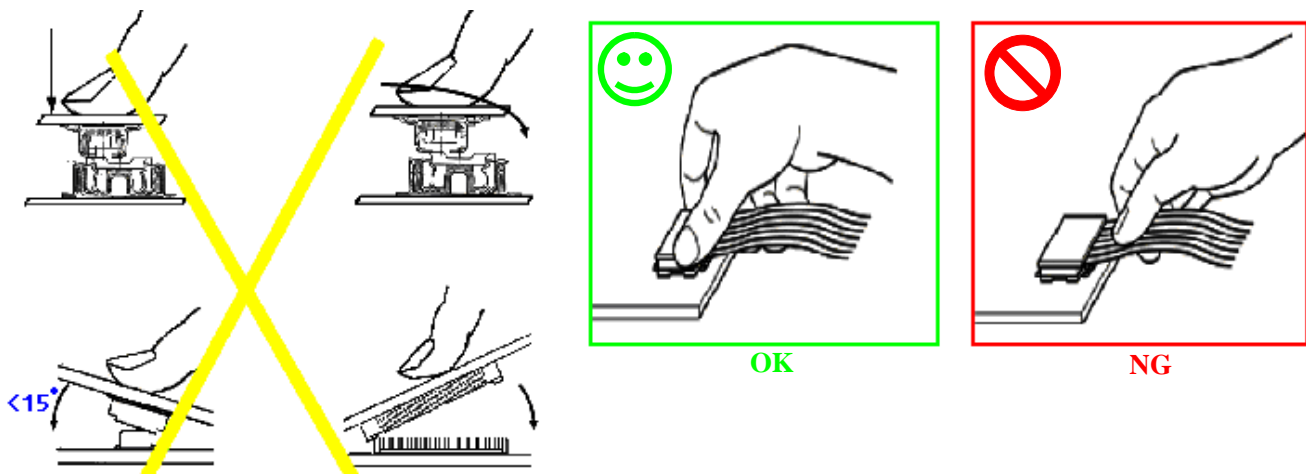
- (1) Cover the surface with a transparent protective plate to protect the polarizer and LC cell.



- (2) When assembling the LCM into other equipment, the spacer to the bit between the LCM and the fitting plate should have enough height to avoid causing stress to the module surface, refer to the individual specifications for measurements. The measurement tolerance should be ± 0.1 mm.

Precaution for assemble the module with BTB connector:

Please note the position of the male and female connector position, don't assemble or assemble like the method which the following picture shows



Precaution for soldering the LCM

	Manual soldering	Machine drag soldering	Machine press soldering
No ROHS product	290°C ~350°C. Time : 3-5S.	330°C ~350°C. Speed : 4-8 mm/s.	300°C ~330°C. Time : 3-6S. Press: 0.8~1.2Mpa
ROHS product	340°C ~370°C. Time : 3-5S.	350°C ~370°C. Time : 4-8 mm/s.	330°C ~360°C. Time : 3-6S. Press: 0.8~1.2Mpa

(1) If soldering flux is used, be sure to remove any remaining flux after finishing to soldering operation. (This does not apply in the case of a non-halogen type of flux.) It is recommended that you protect the LCD surface with a cover during soldering to prevent any damage due to flux spatters.

(2) When soldering the electroluminescent panel and PC board, the panel and board should not be detached more than three times. This maximum number is determined by the temperature and time conditions mentioned above, though there may be some variance depending on the temperature of the soldering iron.

(3) When remove the electroluminescent panel from the PC board, be sure the solder has completely melted, the soldered pad on the PC board could be damaged.

Precautions for Operation

(1) Viewing angle varies with the change of liquid crystal driving voltage (VLCD). Adjust VLCD to show the best contrast.

(2) It is an indispensable condition to drive LCD's within the specified voltage limit since the higher voltage then the limit cause the shorter LCD life. An electrochemical reaction due to direct current causes LCD's undesirable deterioration, so that the use of direct current drive should be avoided.

(3) Response time will be extremely delayed at lower temperature than the operating temperature range and on the other hand at higher temperature LCD's show dark color in them. However those phenomena do not mean malfunction or out of order with LCD's, Which will come back in the specified operating temperature.

(4) If the display area is pushed hard during operation, the display will become abnormal. However, it will return to normal if it is turned off and then back on.

(5) A slight dew depositing on terminals is a cause for electro-chemical reaction resulting in terminal open circuit. Usage under the maximum operating temperature, 50%RH or less is required.

(6) Input logic voltage before apply analog high voltage such as LCD driving voltage when power on. Remove analog high voltage before logic voltage when power off the module. Input each signal after the positive/negative voltage becomes stable.

(7) Please keep the temperature within specified range for use and storage. Polarization degradation, bubble generation or polarizer peel-off may occur with high temperature and high humidity.

Safety

(1) It is recommended to crush damaged or unnecessary LCDs into pieces and wash them off with solvents such as acetone and ethanol, which should later be burned.

(2) If any liquid leaks out of a damaged glass cell and comes in contact with the hands, wash off thoroughly with soap and water.

Limited Warranty

Unless agreed between TRULY and customer, TRULY will replace or repair any of its LCD modules which are found to be functionally defective when inspected in accordance with TRULY LCD acceptance standards (copies available upon request) for a period of one year from date of production. Cosmetic/visual defects must be returned to TRULY within 90 days of shipment. Confirmation of such date shall be based on data code on product. The warranty liability of TRULY limited to repair and/or replacement on the terms set forth above. TRULY will not be responsible for any subsequent or consequential events.

Return LCM under warranty

No warranty can be granted if the precautions stated above have been disregarded. The typical examples of violations are :

- Broken LCD glass.
- PCB eyelet is damaged or modified.
- PCB conductors damaged.
- Circuit modified in any way, including addition of components.
- PCB tampered with by grinding, engraving or painting varnish.
- Soldering to or modifying the bezel in any manner.

Module repairs will be invoiced to the customer upon mutual agreement. Modules must be returned with sufficient description of the failures or defects. Any connectors or cable installed by the customer must be removed completely without damaging the PCB eyelet, conductors and terminals.

n PRIOR CONSULT MATTER

- 1.①For Truly standard products, we keep the right to change material, process ... for improving the product property without notice on our customer.
- ②For OEM products, if any change needed which may affect the product property, we will consult with our customer in advance.
- 2.If you have special requirement about reliability condition, please let us know before you start the test on our samples.

n FACTORY

FACTORY NAME: TRULY SEMICONDUCTORS LTD.

FACTORY ADDRESS: Truly Industrial Area, ShanWei City,GuangDong,China

P.C: 516600 **URL:** <http://www.truly.com.hk> <http://www.trulysemi.com>