



Instructions for Operating Fahold 3rd Generation Programmer/ Software

2024.10.1 Version

Five Features

1. PRODUCT DATA PRE-SET
/DOWNLOAD

2. UPDATING NEW
PRODUCT DATA
THROUGH DATA TABLES

3. SIMPLY CONNECT DIM+,
DIM - TWO DIMMING
LIGHTS TO PERFORM DATA
READING AND WRITING

4. WRITE/READ BACK
TIME<2 SECONDS/TIME

5. AUTOMATICALLY SHUT
DOWN 5 MINUTES
WITHOUT OPERATION,
EXTENDING BATTERY LIFE

1. Preparations



PC with Windows
7/10/11 system



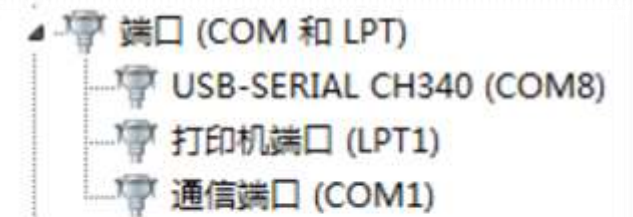
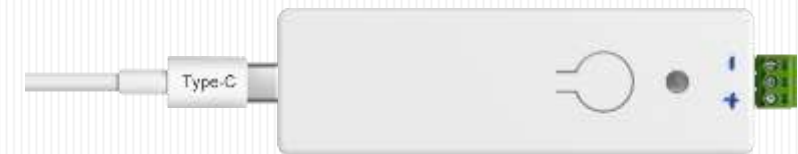
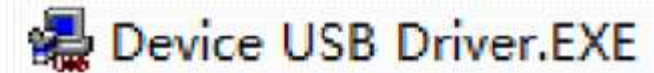
Micro Type C
USB connection cable



FAHOLD third-
generation
programmer

2. Software installation/connection

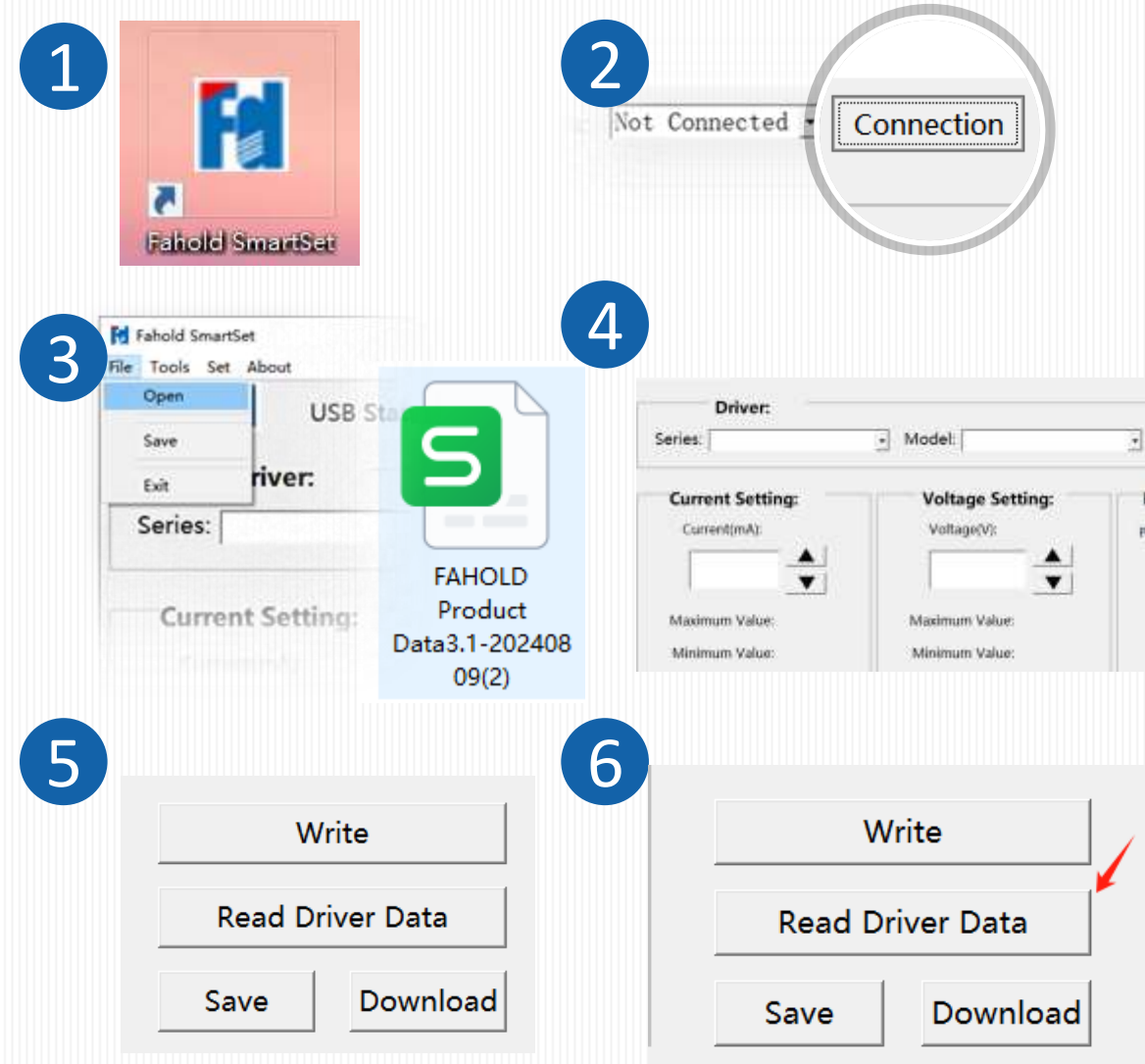
- Double click on Device USB Driver.exe and install the driver file according to the default options
- Double click on FAHOLD setup xxxxxxxx. exe and install the application using the default options. Please close the antivirus software during the installation process, otherwise it may mistakenly prompt for a virus
- After installing the above two programs, restart the computer
- Then connect the computer through a Micro USB cable and wait for about 5 seconds
- Open my computer - Device Manager, and you can see that the device with the CH340 label is successfully connected. After the device (COM3), it is assigned the device number, which is randomly assigned during installation and remains fixed after completion
- The devices installed on Windows 7 and Windows 11 systems are shown in the figure on the right



3. PC software operation - main interface

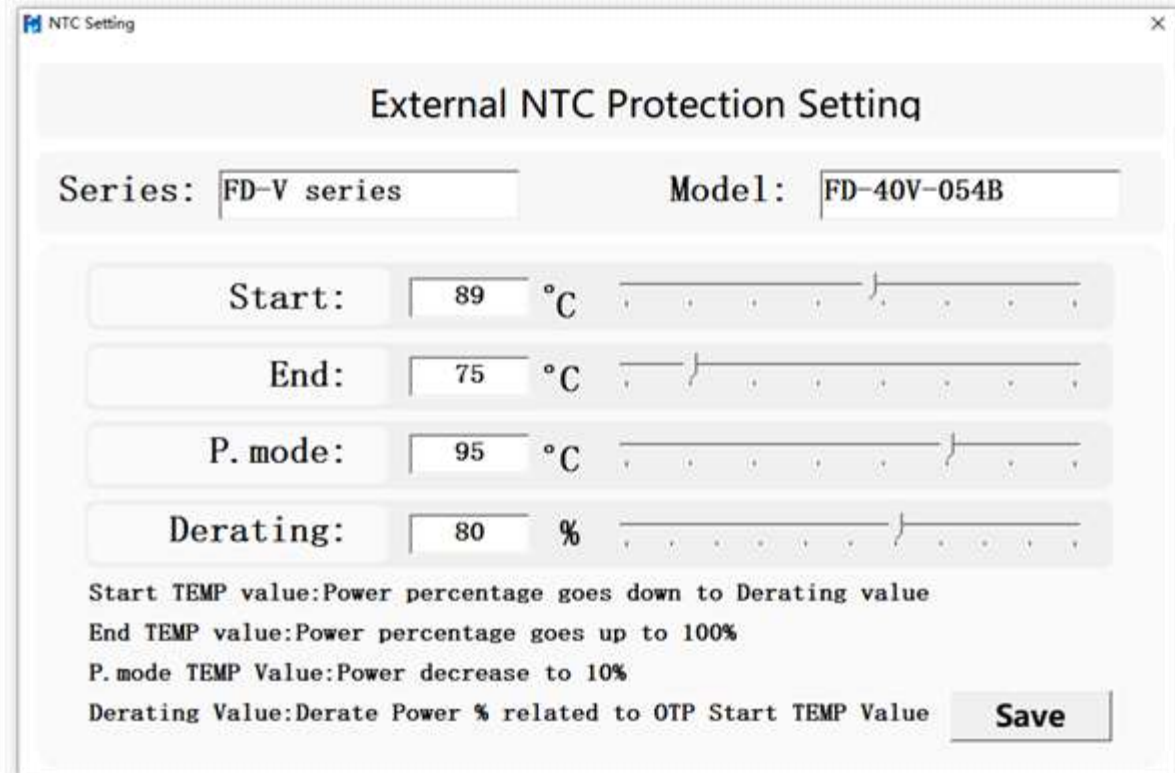
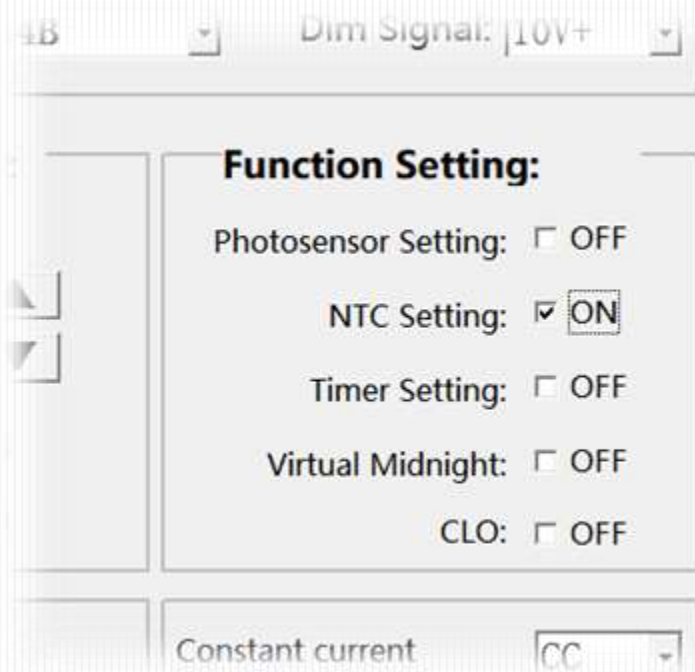


1. After connecting the programming controller, open the software in the right image and enter the main interface
2. Click on the “Connection” button, and available serial ports will pop up. Click OK to proceed
3. Click on: File - Open, find the path to store the FAHOLD Product Data 2024.08.09. xlsx file, and open the file to import product related data
4. Select the relevant series and models as needed, set the relevant parameters, and make the Current Setting and Voltage setting.
5. Click “Write”, and click “save” to save the settings. Saving requires waiting for a few seconds for a response
6. Click “Read Driver Data”, a new interface appears and shows the New Driver Data you just programmed.



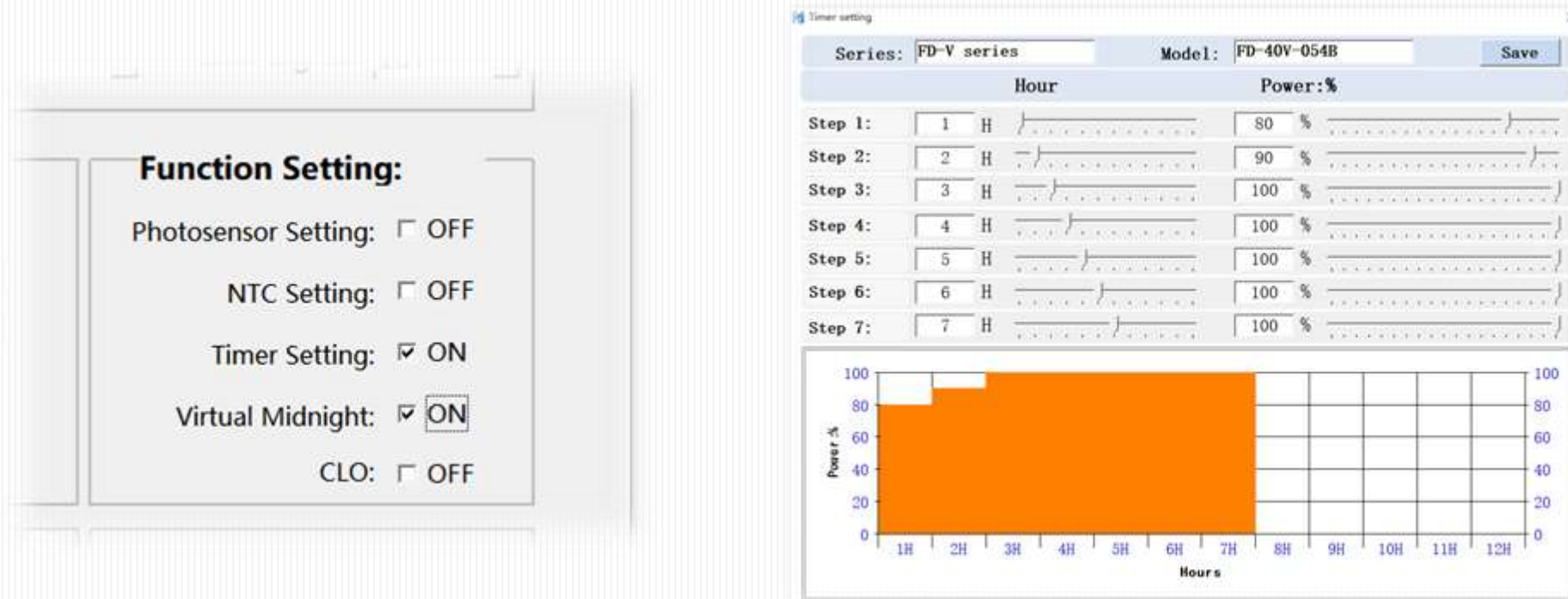
4. PC software operation - NTC settings

1. Click on: Settings-Temperature Settings to open the temperature settings interface
2. After setting various parameters, click "Save" to save the set data
3. To enable the NTC function, you need to check the enable option on the main interface
4. If you are not using this feature, please keep this option turned off



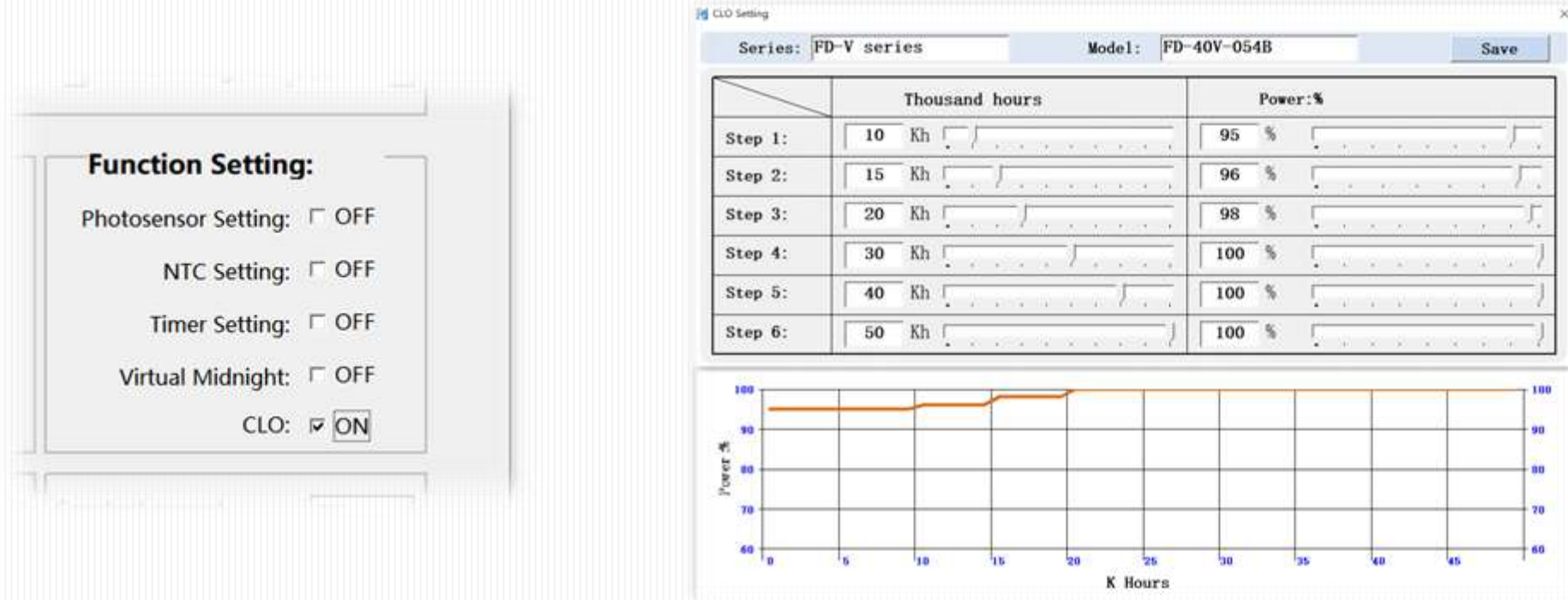
5. PC software operation - time setting

1. Click on: Settings - Time Setting to open the time setting interface
2. After setting various parameters, click "Save" to save the set data
3. If you want to enable the time control function, you need to check the enable option on the main interface. If you do not use this function, please keep turning it off
4. Virtual Midnight: With the time control function, it can follow the changes in daylight hours. Enabling this function alone is invalid

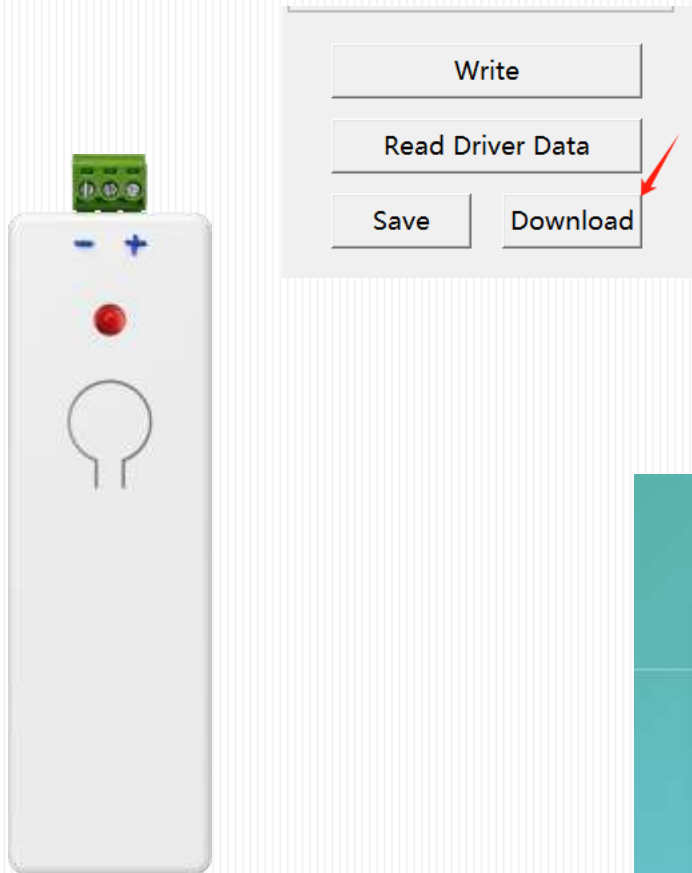


6. PC Software Operation - Light Attenuation Compensation Settings

1. Click on: Settings - Light attenuation compensation settings to open the light attenuation compensation settings interface
2. After setting various parameters, click "Save" to save the set data
3. To enable the time control function, you need to check the enable option on the main interface
4. If you are not using this feature, please keep this option turned off

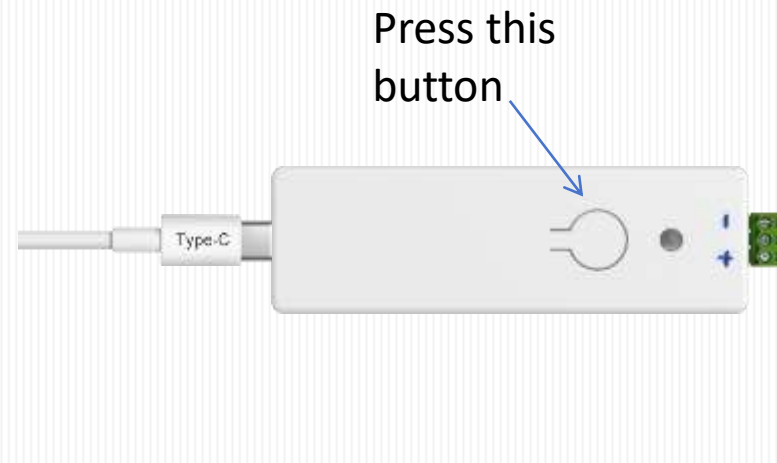


7. Extra Function: Portable & Quick Programming



When the indicator in the programmer is red, it indicates the programmer hasn't stored the Driver Model.

Click the "Download" button, then the Model with all the datas setted will be saved into the programmer, and the red indicator turned off.



After above, Connect the USB to a portable power bank, and then press the button on the programmer, when the indicator flashes to green, that indicates the programming finished.
(This make the programming portable and easy to be operated any time, anywhere)



END