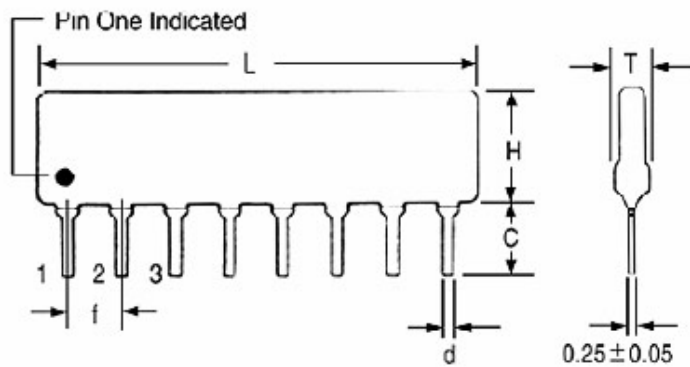


**DIMENSION**

Unit: mm

TYPE	L (MAX)	H (MAX)		T (MAX)	C □0.5	d □0.05	f □0.2
		R	X				
4 pin	10.2	5.08	8	2.5	3.5	0.5	2.54
5 pin	12.7						
6 pin	15.3						
7 pin	17.8						
8 pin	20.4						
9 pin	22.9						
10 pin	25.4						
11 pin	28.0						
12 pin	30.5						
13 pin	33.1						
14 pin	35.6						

**RATING**

Operating Temp. Range	-55°C~+125°C		Wattage/ Element	R		X	
±100PPM 50 ohm~2.2 M ohm				B style	Others	B style	Others
±250PPM <50 ohm or ≥2.2M ohm				0.2W	0.125W	0.30W	0.25W
Rating Ambient Temp.	+70°C		Max. Working Voltage	100V		200V	
Resistance Range (E-12 Series)	B style	Others	Resistance Tolerance	F= ±1%, G= ±2%, J= ±5%			
	100Ω~10K	10Ω~4.7MΩ					

**CIRCUITS CONSTRUCTION**