

SURFACE MOUNT SUPERFAST RECTIFIER

ES1A - ES1J



Cathode is marked by a Band

DO-214AC (SMA)
Surface Mount Package

Superfast recovery times for high efficiency, Glass passivated junction.

ABSOLUTE MAXIMUM RATINGS AND ELECTRICAL CHARACTERISTICS ($T_A = 25^\circ\text{C}$ unless otherwise specified)

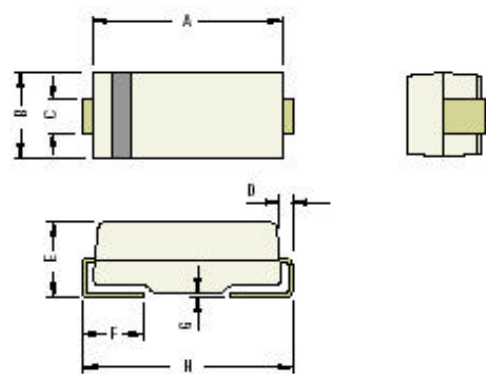
Single phase, half wave, 60Hz, resistive or inductive load. For capacitive load, derate current by 20%.

DESCRIPTION	SYMBOL	VALUE							UNIT
		ES1A	ES1B	ES1C	ES1D	ES1E	ES1G	ES1J	
Maximum Recurrent Peak Reverse Voltage	V _{RRM}	50	100	150	200	300	400	600	V
Maximum RMS Voltage	V _{RMS}	35	70	105	140	210	280	420	V
Maximum DC Blocking Voltage	V _{DC}	50	100	150	200	300	400	600	V
Maximum Average Forward Rectified Current 0.375" (9.5mm) lead length @ T _L =120°C	I _(AV)	1.0							A
Peak Forward Surge Current, 8.3ms single half sine-wave superimposed on rated load (JEDEC method)	I _{FSM}	30							A
Maximum Forward Voltage @ 1.0A	V _F	0.95				1.25		1.7	V
Maximum DC Reverse Current T _A = 25°C @ Rated DC Blocking Voltage T _A = 100°C	I _R	5.0 150							μA
Maximum Reverse Recovery Time (Note 1)	t _{rr}	35							ns
Typical Junction Capacitance (Note2)	C _j	7							pF
Maximum Thermal Resistance (Note3)	R _{th(j-l)}	35							°C/W
Operating Junction Temperature and Storage Temperature Range	T _j , T _{stg}	-50 to +150							°C

NOTES:

- Reverse Recovery Test Conditions: $I_F=0.5\text{A}$, $I_R=1\text{A}$, $I_{RR}=0.25\text{A}$
- Measured at 1 MHz and applied reverse voltage of 4.0 VDC.
- 8.0 mm² (0.013mm thick) land areas.

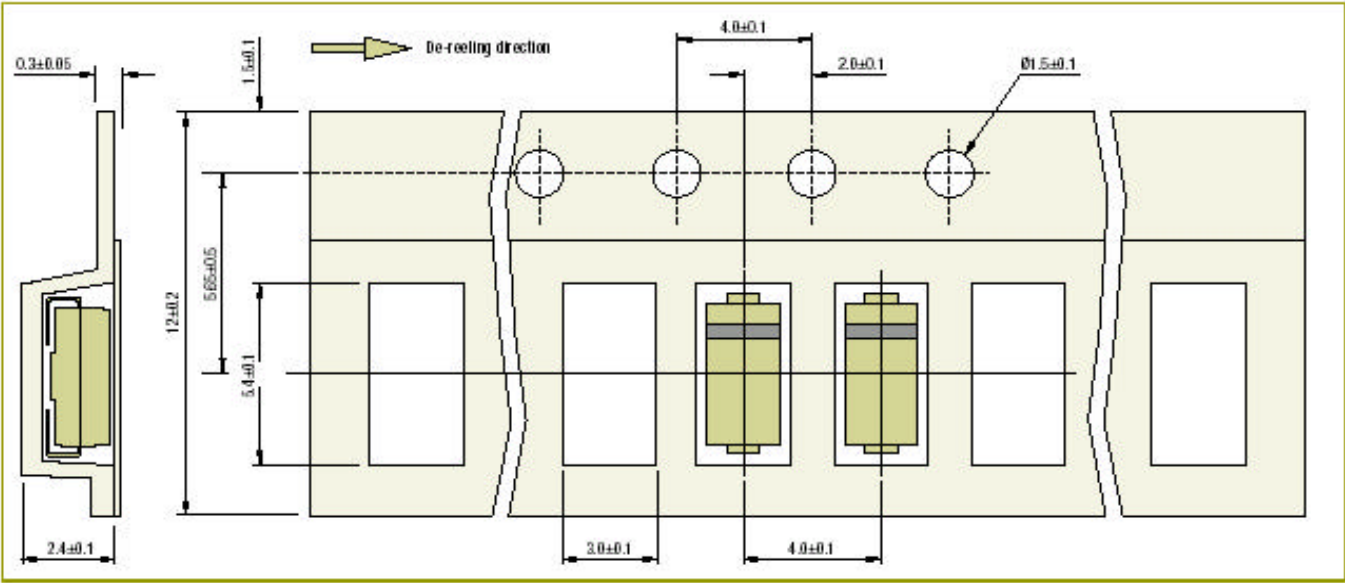
DO-214AC (SMA) SMD Plastic Package



DIM	Min	Max	DIM	Min	Max
A	4.06	4.57	E	1.70	2.31
B	2.18	2.79	F	0.89	1.50
C	1.29	1.70	G	0.102	0.203
D	0.152	0.305	H	4.70	5.31

All Dimensions are in mm
Cathode is marked by a Band

DO-214AC (SMA) SMD Plastic Package



All Dimensions are in mm
Cathode is marked by a Band

Standard Packing: 5K per Reel

Disclaimer

The product information and the selection guides facilitate selection of the CDIL's Discrete Semiconductor Device(s) best suited for application in your product(s) as per your requirement. It is recommended that you completely review our Data Sheet(s) so as to confirm that the Device(s) meet functionality parameters for your application. The information furnished in the Data Sheet and on the CDIL Web Site/CD are believed to be accurate and reliable. CDIL however, does not assume responsibility for inaccuracies or incomplete information. Furthermore, CDIL does not assume liability whatsoever, arising out of the application or use of any CDIL product; neither does it convey any license under its patent rights nor rights of others. These products are not designed for use in life saving/support appliances or systems. CDIL customers selling these products (either as individual Discrete Semiconductor Devices or incorporated in their end products), in any life saving/support appliances or systems or applications do so at their own risk and CDIL will not be responsible for any damages resulting from such sale(s).

CDIL strives for continuous improvement and reserves the right to change the specifications of its products without prior notice.



CDIL is a registered Trademark of
Continental Device India Limited

C-120 Naraina Industrial Area, New Delhi 110 028, India.
Telephone + 91-11-2579 6150, 5141 1112 Fax + 91-11-2579 5290, 5141 1119
email@cdil.com www.cdilsemi.com