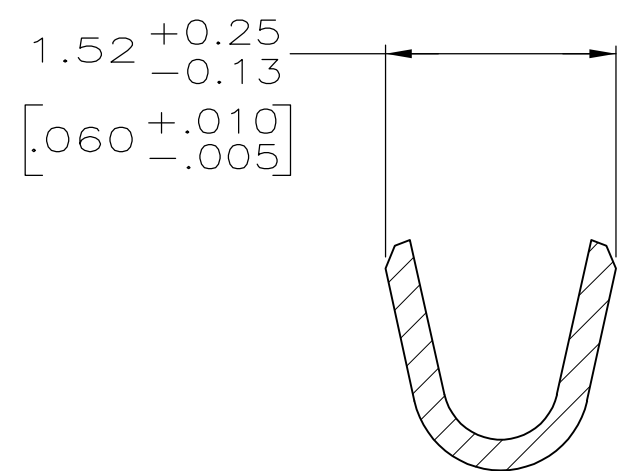
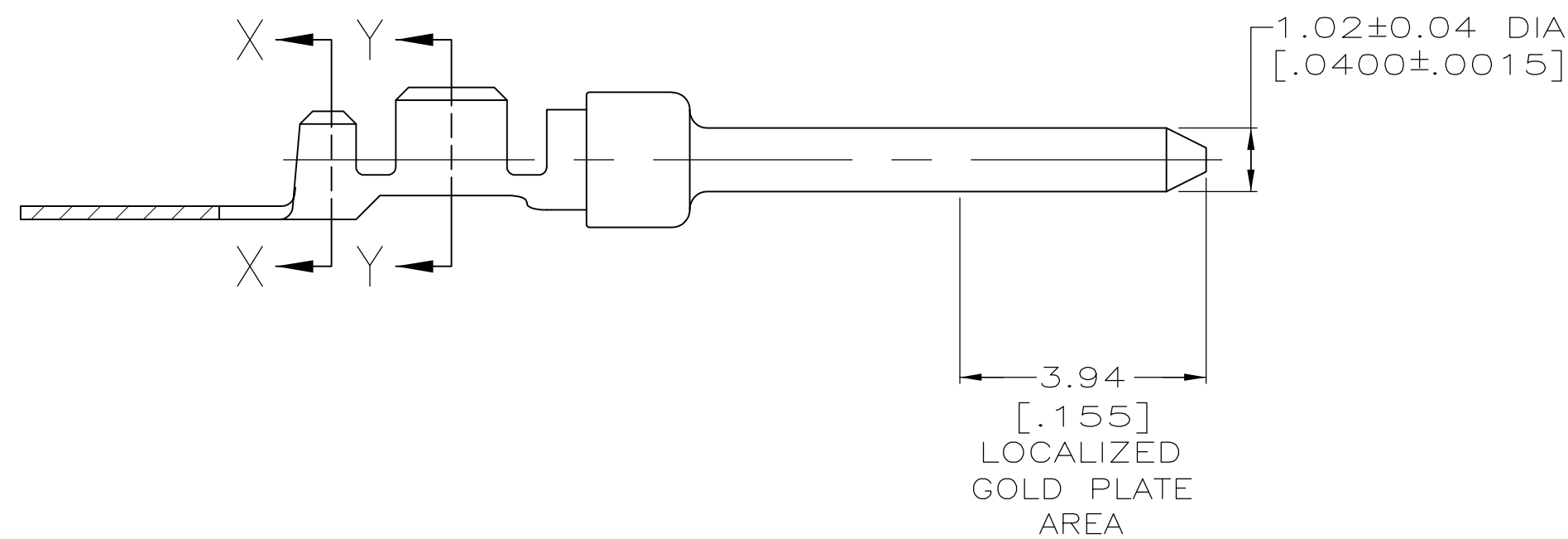
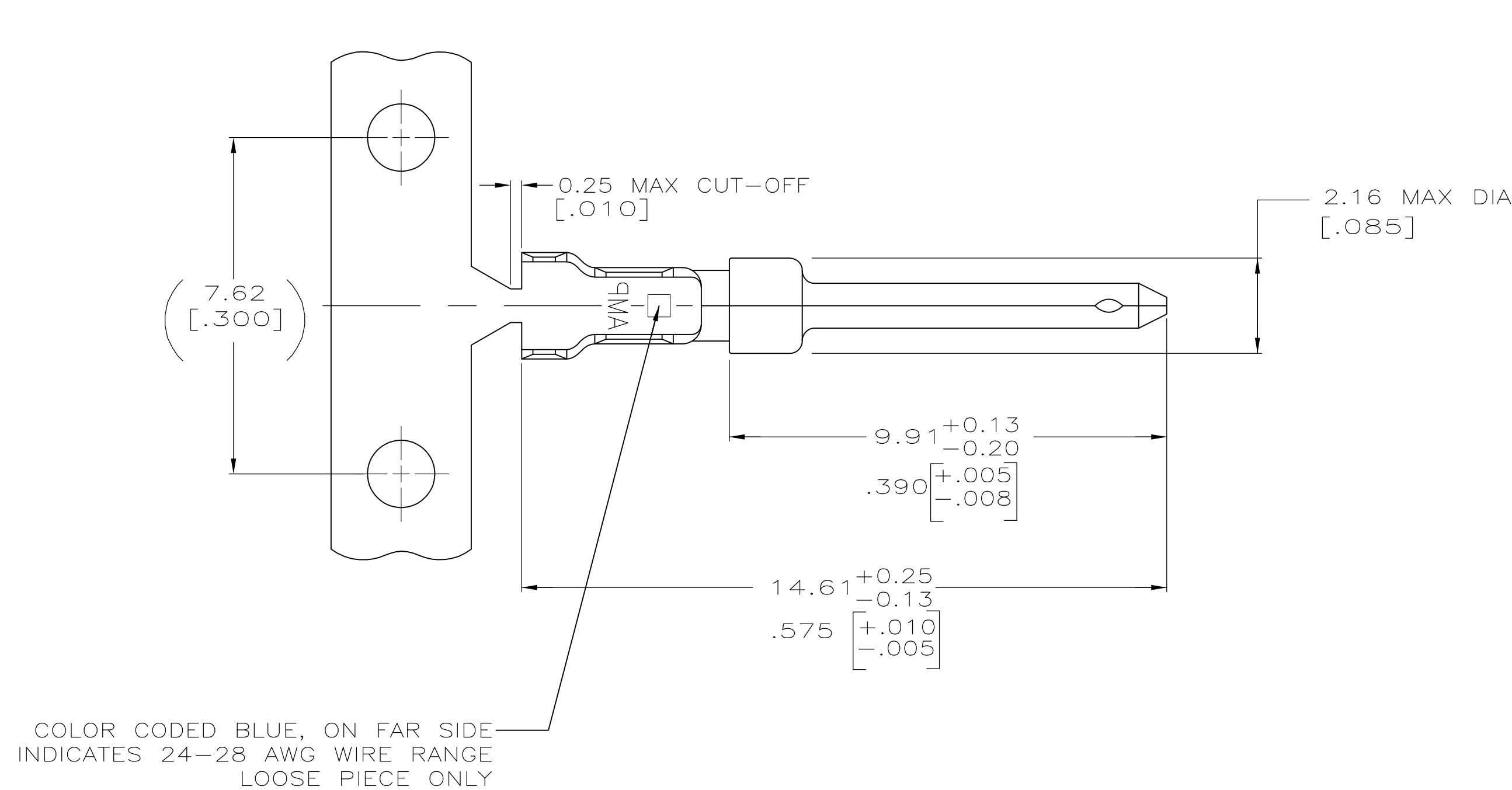


D

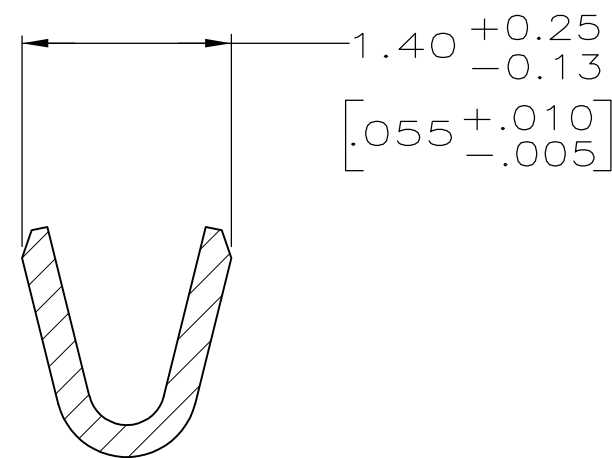
C

B

A



SECTION X—X
INSULATION BARREL
SCALE 20:1



SECTION Y—Y
WIRE BARREL
SCALE 20:1

1. FOR MINI-APPLICATOR AND STRIPPER CRIMPER.
2. FOR HAND TOOL USE ONLY.
3. WIRE RANGE OF 24-28, INSULATION RANGE OF .030-.040.
4. TIN PLATING MAY NOT APPEAR ON CARRIER STRIP.
5. GOLD FLASH IN LOCALIZED GOLD PLATE AREA,
2.54µm [.000100] MIN TIN ON WIRE BARRELS, ALL OVER
0.76µm [.000030] MIN NICKEL UNDERPLATE.
6. GOLD FLASH IN LOCALIZED GOLD PLATED AREA,
0.76µm [.000030] MIN TIN ON WIRE BARRELS, ALL OVER
0.76µm [.000030] MIN NICKEL UNDERPLATE.
7. GOLD PLATED IN LOCALIZED GOLD PLATE AREA AS FOLLOWS:
0.76µm [.000030] MIN GOLD IN MATED AREA,
2.54µm [.000100] MIN TIN ON WIRE BARRELS, ALL OVER
1.27µm [.000050] MIN NICKEL UNDERPLATE.
OR
GOLD FLASH OVER
PALLADIUM-NICKEL PLATE, 0.76µm [.000030] MIN TOTAL IN MATED AREA,
2.54µm [.000100] MIN TIN ON WIRE BARRELS, ALL OVER
1.27µm [.000050] MIN NICKEL UNDERPLATE.
8. FOR STANDARD APPLICATOR ONLY.

1	2	STRIP	1658540-6
2	3	LOOSE PIECE	1658540-5
3	4	STRIP	1658540-4
4	5	STRIP	1658540-3
5	6	LOOSE PIECE	1658540-2
6	7	STRIP	1658540-1
FINISH	USE	TYPE	PART NUMBER

THIS DRAWING IS A CONTROLLED DOCUMENT.		DWN L. VARELA - DOCKS CHK S. BOLASH APVD M. WALMSLEY	11-17-04 11-17-04 11-17-04	TE Connectivity	
DIMENSIONS: mm [INCHES]		TOLERANCES UNLESS OTHERWISE SPECIFIED:		NAME	
		0. PLC	± -	PRODUCT SPEC	
		1. PLC	± -	108-40005	
		2. PLC	± 0.13 [.005]	APPLICATION SPEC	
		3. PLC	± -	114-10000	
MATERIAL BRASS		FINISH SEE TABLE		WEIGHT -	RESTRICTED TO -
CUSTOMER DRAWING		SCALE 10:1		SHEET 1 OF 1 REV D1	

Mouser Electronics

Authorized Distributor

Click to View Pricing, Inventory, Delivery & Lifecycle Information:

[TE Connectivity:](#)

[1658540-1](#)