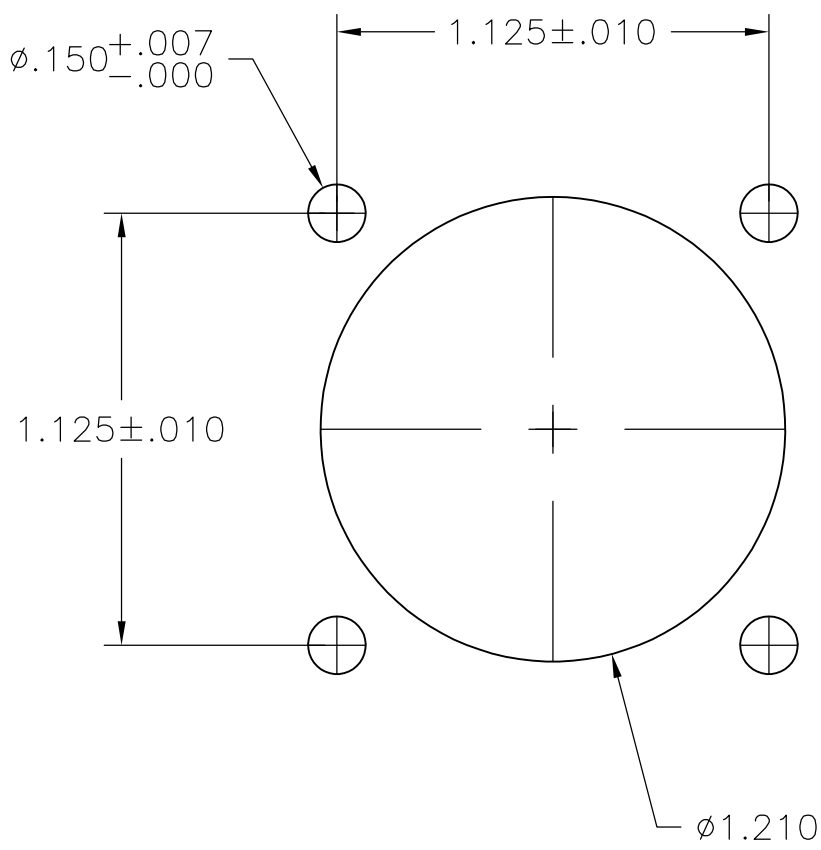
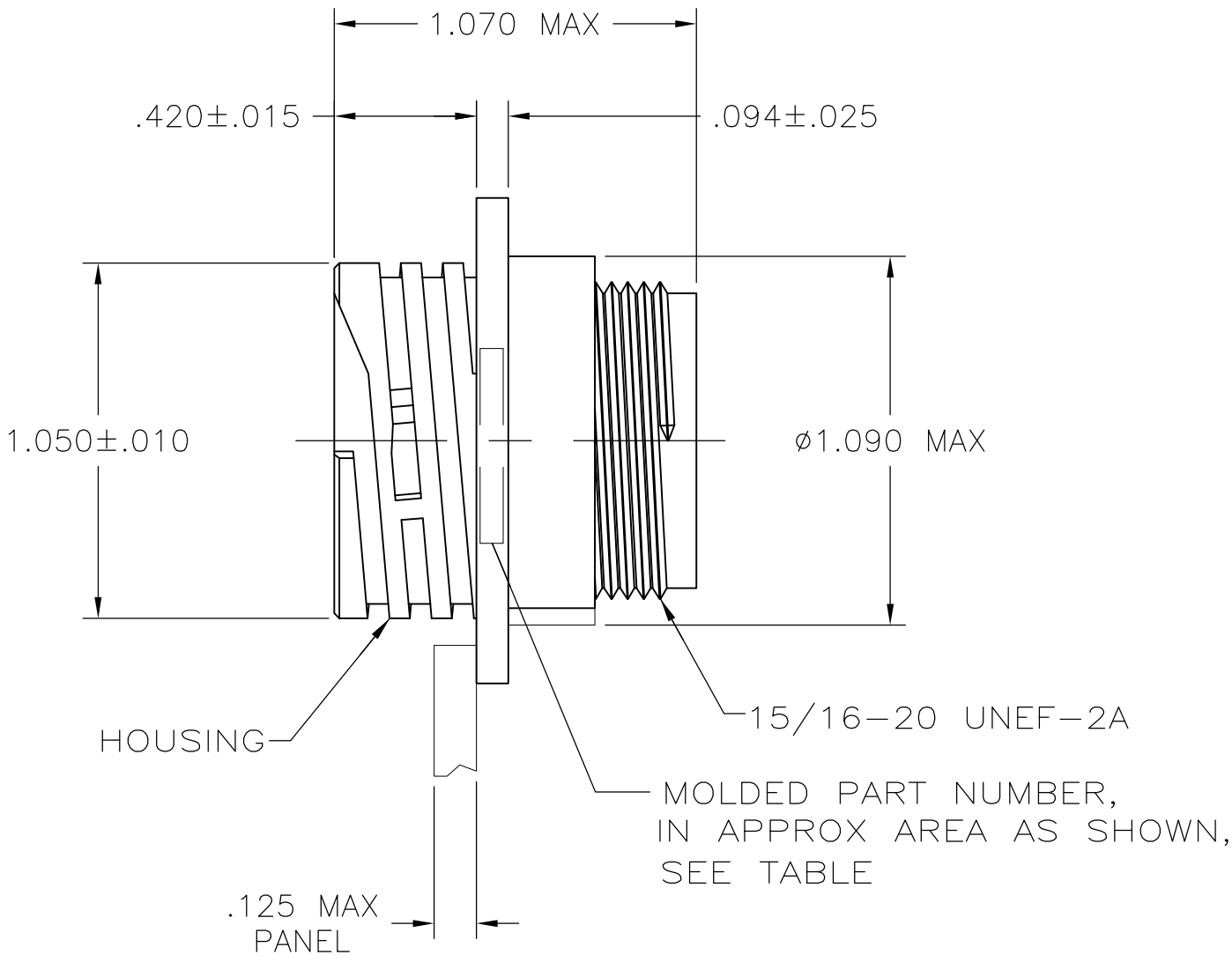
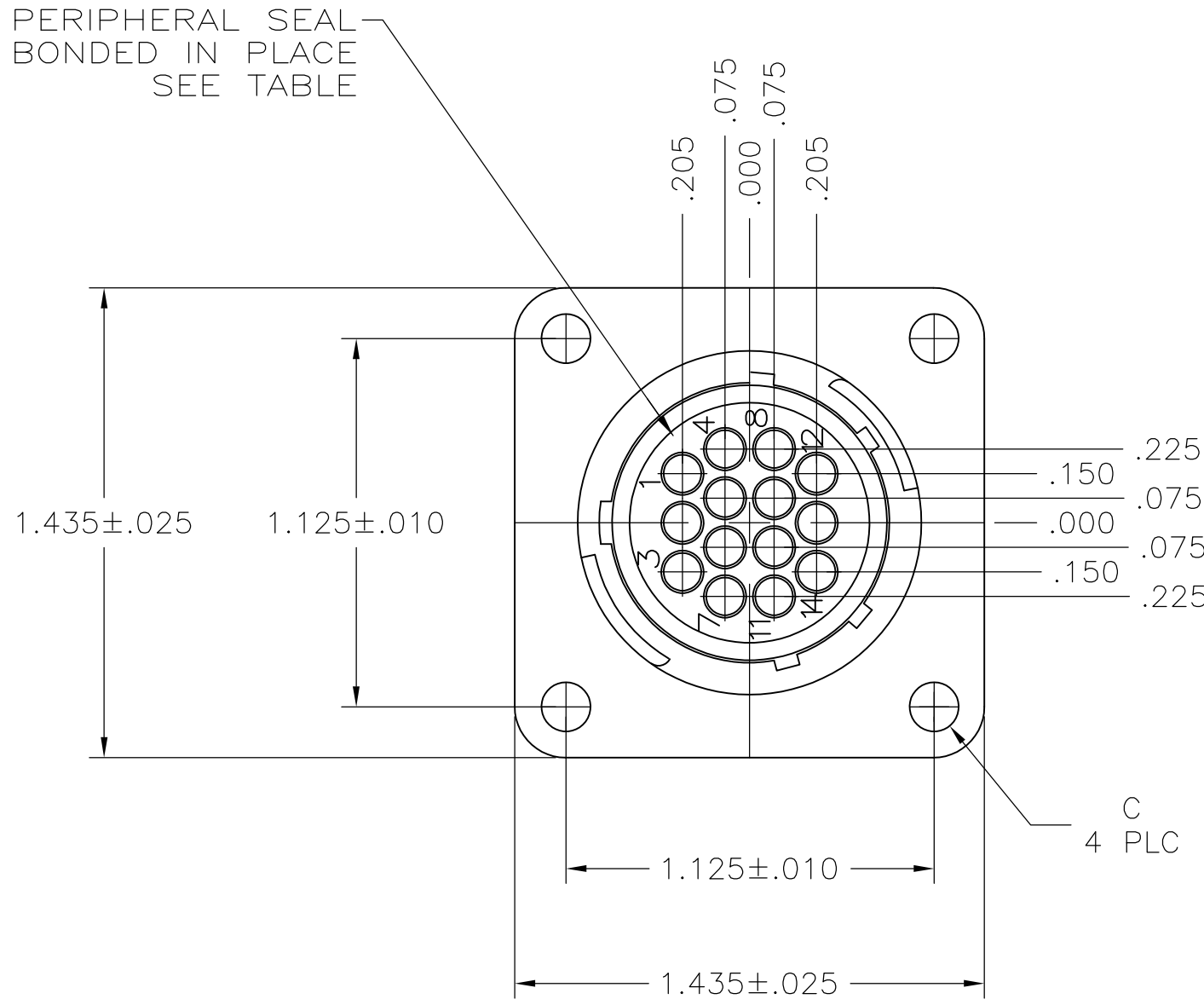
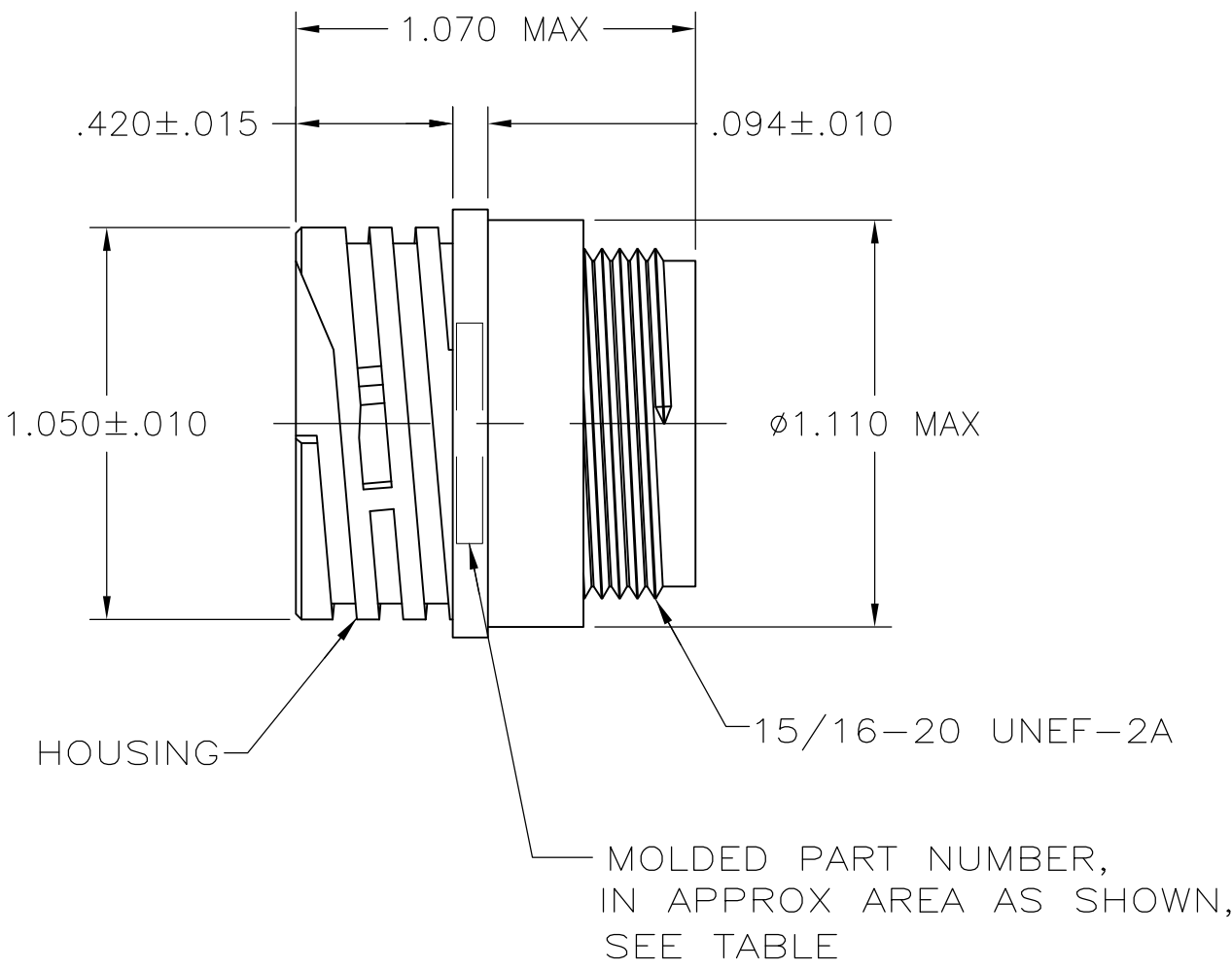
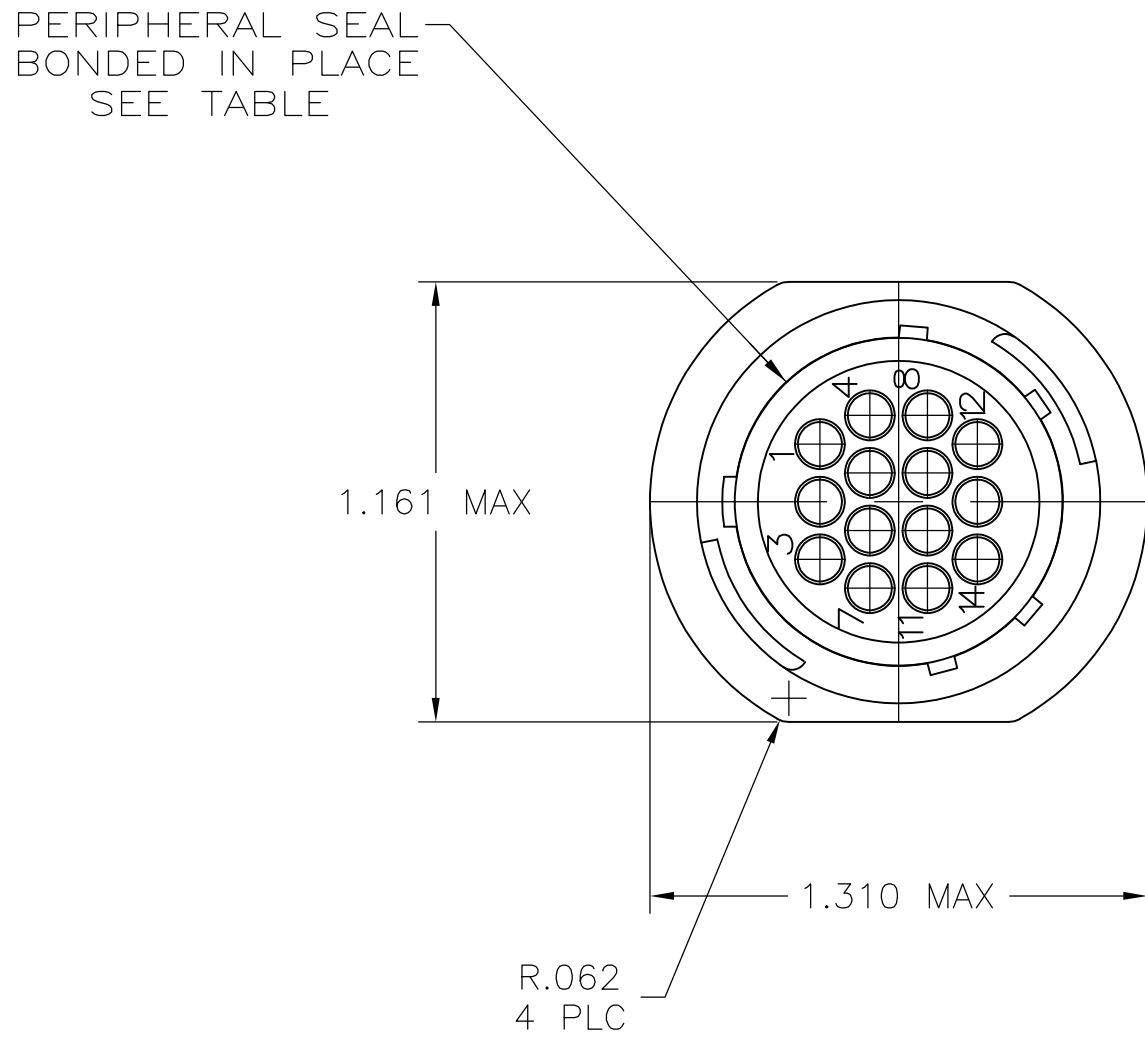


REVISIONS						
P	LTR	DESCRIPTION			DATE	OWN
S		REVISED	PER	ECO-12-015521	28SEP12	KH
T		REVISED	PER	ECO-17-000037	10MAR2017	RS



RECOMMENDED PANEL CUTOUT


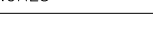
DETAIL A



DETAIL B

- 1 CAVITY IDENTIFICATION ON FRONT AND REAR FACE.
- 2 WILL ACCEPT FOURTEEN (14) MULTIMATE SOCKET CONTACTS.

OBsolete	4-40 THREADED INSERTS	-	STANDARD	YES	A	206043-8
OBsolete	ø.150	-	SMALL PACK	NO	A	206043-6
	-	-	STANDARD	YES	B	206043-5
	ø.150	-	STANDARD	YES	A	206043-4
	-	-	STANDARD	NO	B	206043-3
	ø.150	206043-1	STANDARD	NO	A	206043-1
	DIM C	MOLDED PART NUMBER	PACKAGING	PERIPHERAL SEAL	SEE DETAIL	PART NO.

THIS DRAWING IS A CONTROLLED DOCUMENT.				DWN	W. LENKER	09/10/92	 TE Connectivity						
				CHK	R. STONE	08/11/93							
DIMENSIONS: INCHES		TOLERANCES UNLESS OTHERWISE SPECIFIED:		APVD	-	NAME	RECEPTACLE ASSEMBLY, REVERSE SEX, SERIES 1, 17-14, CPC						
		0 PLC	± -	PRODUCT SPEC		SIZE			CAGE CODE	DRAWING NO	RESTRICTED TO		
		1 PLC	± -	108-10024									
		2 PLC	± 0.13 [.005]	APPLICATION SPEC									
MATERIAL HOUSING: NYLON BLACK		ANGLES	± -	WEIGHT	-	A1		00779	C	206043	-		
CUSTOMER DRAWING				SCALE		2:1		SHEET		1 OF 1		REV	T

Mouser Electronics

Authorized Distributor

Click to View Pricing, Inventory, Delivery & Lifecycle Information:

[TE Connectivity:](#)

[206043-1](#)